



22956 Highway 61 ♦ Morley, MO 63767 ♦ Phone 573-262-3545 ♦ Fax 573-262-3369

Owners Manual

VIKING-CIVES UNIVERSAL HITCHES



22956 Highway 61 ♦ Morley, MO 63767 ♦ Phone 573-262-3545 ♦ Fax 573-262-3369

TABLE OF CONTENTS

<u>Description</u>	<u>Page</u>
WARRANTY POLICY / ORDERING PARTS	3
WARRANTY REQUEST PROCEDURE	4
INTRODUCTION	5
DRAWING OF GENERAL MOUNTING PROCEDURE	6
PIN HIEGHT REQUIREMENTS	7
DRAWING OF TILT UQH HITCH ASSEMBLY (S7016)	8
PARTS BREAK DOWN OF TILT UQH HITCH ASSEMBLY (S7016)	9
DRAWING OF LO-PRO UQH HITCH ASSEMBLY (S7006)	10
PARTS BREAK DOWN OF LO-PRO UQH HITCH ASSEMBLY (S7006)	11
DRAWING OF TILT PIN TYPE HITCH ASSEMBLY (S7011)	12
PARTS BREAK DOWN OF TILT PIN TYPE HITCH ASSEMBLY (S7011)	13
DRAWING OF LO-PRO PIN TYPE HITCH ASSEMBLY (S7001)	14
PARTS BREAK DOWN OF LO-PRO PIN TYPE HITCH ASSEMBLY (S7001)	15
DRAWING OF LO-PRO FLINK HITCH ASSEMBLY (S7004)	16
PARTS BREAK DOWN OF LO-PRO FLINK HITCH ASSEMBLY (S7004)	17
DRAWING OF LO-PRO QUICK LOOP HITCH ASSEMBLY (S7003)	18
PARTS BREAK DOWN OF LO-PRO QUICK LOOP HITCH ASSEMBLY (S7003)	19
DRAWING OF UNIVERSAL TILT FLINK HITCH ASSEMBLY (S7014)	20
PARTS BREAKDOWN OF UNIVERSAL TILT FLINK HITCH ASSEMBLY (S7014)	21
DRAWING OF UNIVERSAL TILT QUICK LOOP HITCH ASSEMBLY (S7013)	22
PARTS BREAKDOWN OF UNIVERSAL TILT QUICK LOOP HITCH ASSEMBLY (S7013)	23
DRAWING OF PIN AND LOOP RECEIVER WITH OUTER LUGS	24



22956 Highway 61 ♦ Morley, MO 63767 ♦ Phone 573-262-3545 ♦ Fax 573-262-3369

WARRANTY POLICY

Wheeler Steel and Truck Equipment, Inc. warrants products of its manufacture against defects in workmanship and material for a period of one year, from the date of shipment to the customer. In consequence of this warranty, any component part or parts of such products proving defective within the above specified time will be repaired or replaced F.O.B. factory. Providing such parts are returned, transportation prepaid, to the factory and found defective by Wheeler Steel and Truck Equipment, Inc.

This warranty will not apply to any product which has been repaired or altered outside of Wheeler Steel and Truck Equipment, Inc. factory in any way, so as in Wheeler Steel and Truck Equipment, Inc.'s judgment, to affect its stability or reliability, nor which has been subject to misuse or accident.

The obligations of Wheeler Steel and Truck Equipment, Inc. under this warranty are limited to the replacement of defective parts. Such obligations are exclusive and in lieu of all other remedies, warranties, guarantees of liabilities, expressed or implied, with respect to each product delivered, hereunder, arising by law or otherwise (including without limitation any obligation or liability by Wheeler Steel and Truck Equipment, Inc. arising from negligence or with respect to fitness, merchantability, loss of use, revenue, or profit, or consequential damages or injuries).

This limited warranty shall not be extended, altered, or varied except by a written instrument signed by Wheeler Steel and Truck Equipment, Inc.

Wheeler Steel and Truck Equipment, Inc. assumes no responsibility for engines, electrical equipment or any other equipment and accessories not manufactured by Wheeler Steel and Truck Equipment, Inc. beyond the warranty of the manufacturer of such equipment of accessories.

All warranty work done on Wheeler Steel and Truck Equipment, Inc. equipment must have prior authorization from Wheeler Steel and Truck Equipment, Inc. along with a "**Return Goods Authorization**" number. All labor and parts issued by user for Wheeler Steel and Truck Equipment, Inc. warranty without an authorization number and a signed authorization warranty form will be at the users own cost.

ORDERING PARTS

Delays and errors can be eliminated when ordering instructions are followed correctly.

1. Place orders direct with Wheeler Steel and Truck Equipment, Inc. / nearest dealer.
2. State Company name, address, and postal/zip code.
3. Give the exact model and serial number of the equipment/unit (stamped on the unit identification plate.)
4. Furnish part number, description and quantities required. Print or type order clearly.
5. Give specific shipping instructions.

Wheeler Steel and Truck Equipment, Inc. – 22956 Highway 61 Morley, MO 63767; (573) 262-3545; (573) 262-3369

Service and Parts: Daniel Wheeler; danielwheeler@wheelercives.com



22956 Highway 61 ♦ Morley, MO 63767 ♦ Phone 573-262-3545 ♦ Fax 573-262-3369

WARRANTY REQUEST PROCEDURE

All repairs considered for warranty that are performed outside of Wheeler Steel and Truck Equipment, Inc.; require prior written authorization from Wheeler Steel and Truck Equipment, Inc. Failure to obtain written warranty authorization prior to repairs may result in the rejection of the warranty claim. **To obtain warranty consideration one must provide all required Wheeler Steel and Truck Equipment, Inc. with unit information including date of manufacture and serial numbers.** In most cases this information is easily obtained from the “Shipped Unit Tag” (located in most cases inside the driver’s side door) and/or individual unit serial tag.

(A) To obtain Parts Warranty Consideration:

- (1) Contact Wheeler Steel and Truck Equipment, Inc. customer service to obtain a Return Goods Authorization (RGA) number. Any product arriving at Wheeler Steel and Truck Equipment, Inc. without a RGA number will be rejected and returned to the sender at his or her own expense.
- (2) Goods are to be shipped prepaid to Wheeler Steel and Truck Equipment, Inc. in Morley, Missouri. **All items should be clearly marked with the appropriate RGA number.**
- (3) When a replacement item is shipped to replace a defective part for warranty consideration the following additional steps will occur:
 - a) An invoice will be generated for the value of the replacement item(s).
 - b) The defective part(s) must be returned (prepaid) to Wheeler Steel and Truck Equipment, Inc.
 - c) Upon receiving the defective part(s) Wheeler Steel and Truck Equipment, Inc. will issue and process a Discrepant Material Report (DMR). Once the evaluation of the DMR report is complete and the parts are deemed warranty, a credit will be issued against the outstanding invoice. **If the part(s) are deemed Non-warranty the invoice will remain outstanding to be paid to Wheeler Steel and Truck Equipment, Inc.** Any part(s) to be returned to the customer will be at his or her own expense.

(B) To obtain Labor Parts Repair Warranty Consideration:

In the event that repairs are required outside of Wheeler Steel and Truck Equipment, Inc. facility that may be considered for warranty the following steps must occur. **Notification of Wheeler Steel and Truck Equipment, Inc. customer service must take place prior to the start of any repairs.**

- (1) Contact Wheeler Steel and Truck Equipment, Inc. customer service to obtain a Warranty Claim Form (WCF) and warranty authorization number.
- (2) Fill out all required WCF information and fax or mail the completed form to Wheeler Steel and Truck Equipment, Inc., attention Customer Service Department.
- (3) Once the WCF report has been reviewed warranty authorization will be granted or denied. **NOTE: Wheeler Steel and Truck Equipment, Inc. warranty labor rates will apply unless specifically determined otherwise.** Any part(s) involved in a WCF request must follow the Parts Warranty Consideration procedures.



22956 Highway 61 ♦ Morley, MO 63767 ♦ Phone 573-262-3545 ♦ Fax 573-262-3369

INTRODUCTION

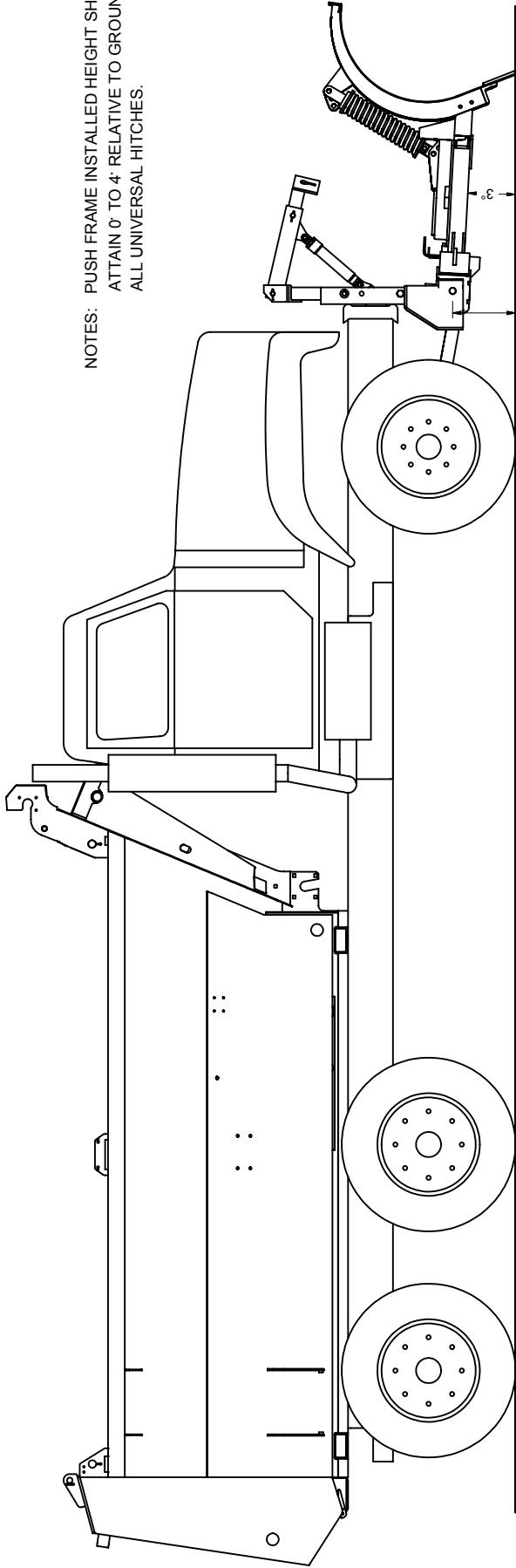
This instruction/parts manual has operation and maintenance information for Wheeler Steel and Truck Equipment, Inc. **Universal Hitches**. It has been prepared to familiarize you with the design features of the unit, and to instruct you in its proper operation and maintenance.

Read this manual carefully before you operate and/or service your **MW Universal Hitches**. Remember that you're working with heavy equipment that can injure you or someone else. You can help lessen the chance of injury by following the procedures in this manual, carefully.

DANGER: If incorrectly used, this equipment can cause severe injury. Your chance of injury can be greatly reduced by following all caution/warning decal notifications. All decals must be kept clean and complete. Replace any decals that are unreadable. Decals may be purchased directly from Wheeler Steel and Truck Equipment, Inc. and/or the nearest authorized dealer. All Operator/Service people should review this manual carefully and become familiar with its contents. **If anyone else beside you operates or services this equipment, make sure they read this manual and are instructed to follow the safety procedures related to this equipment.**



22956 HIGHWAY 61 MORLEY, MO 63767 (573) 262-3545 (573) 262-3369 FAX



NOTES: PUSH FRAME INSTALLED HEIGHT SHOULD ATTAIN 0° TO 4° RELATIVE TO GROUND FOR ALL UNIVERSAL HITCHES.

14" MIN to 15" MAX

NOTES: HITCH SHOWN IS NOT REPRESENTED FOR ALL UNIVERSAL HITCHES.

**VIKING-CIVES GROUP UNIVERSAL HITCH
-GENERAL MOUNTING PROCEDURE-**

- STEP 1:** CENTER OPTIONAL BUMPER ANGLE (ITEM 00122027) ONTO EXISTING FRONT BUMPER; NEXT, LOCATE AND DRILL A MINIMUM OF THREE (3) 11/16" DIAMETER HOLES THROUGH THE BUMPER ANGLE AND EXISTING TRUCK BUMPER. BOLT THE BUMPER ANGLE IN PLACE WITH 5/8" DIAMETER BOLTS.
- STEP 2:** CENTER THE HITCH ONTO THE BUMPER ANGLE WITH AN APPROXIMATE PUSH HEIGHT CENTER OF 14" TO 15" FROM GROUND LEVEL; WELD HITCH TO BUMPER ANGLE.
- STEP 3:** LOCATE THE REAR CLIP ANGLE BRACKETS FROM OPTIONAL BRACE ARM KIT (ITEM 200122035) IN A SUITABLE LOCATION ON THE TRUCK FRAME BEHIND THE SPRING SHACKLE. NEXT, MARK AND DRILL FOUR (4) 11/16" DIAMETER HOLES ON EACH CLIP ANGLE. TRANSFER THE EXISTING HOLES FROM THE FRAME TO THE CLIP ANGLE WHERE POSSIBLE. BOLT IN PLACE WITH FOUR (4) 5/8" DIAMETER BOLTS. [NOTE: THE CLIP ANGLES MUST BE SET ACCORDING TO THE FRAME AND SPRING WIDTHS, ALLOWING CLEARANCE FOR THE THRUST ARM BRACES, PRIOR TO FINAL WELDING.]
- STEP 4:** LOCATE THE CONNECTING LUGS ON THE HITCH IN LINE WITH THE REAR CLIP ANGLES AND WELD IN PLACE.
- STEP 5:** MEASURE AND CUT BRACE BARS FROM OPTIONAL BRACE ARM KIT (200122035) TO SUIT. NEXT, MARK AND DRILL A 13/16" DIAMETER HOLE IN BRACE BAR TO MATCH CLIP ANGLE. BOLT IN PLACE WITH 3/4" DIAMETER BOLTS.

TO MAINTAIN OUR ON-GOING PRODUCT AND DEVELOPMENT IMPROVEMENT PROGRAM, VIKING-CIVES RESERVES THE RIGHT TO CHANGE EQUIPMENT & SPECIFICATION WITHOUT NOTICE.



22956 Highway 61 ♦ Morley, MO 63767 ♦ Phone 573-262-3545 ♦ Fax 573-262-3369

PIN HEIGHT REQUIREMENTS

A. Angular push frame plows: 14" to 16"

1. MW plows

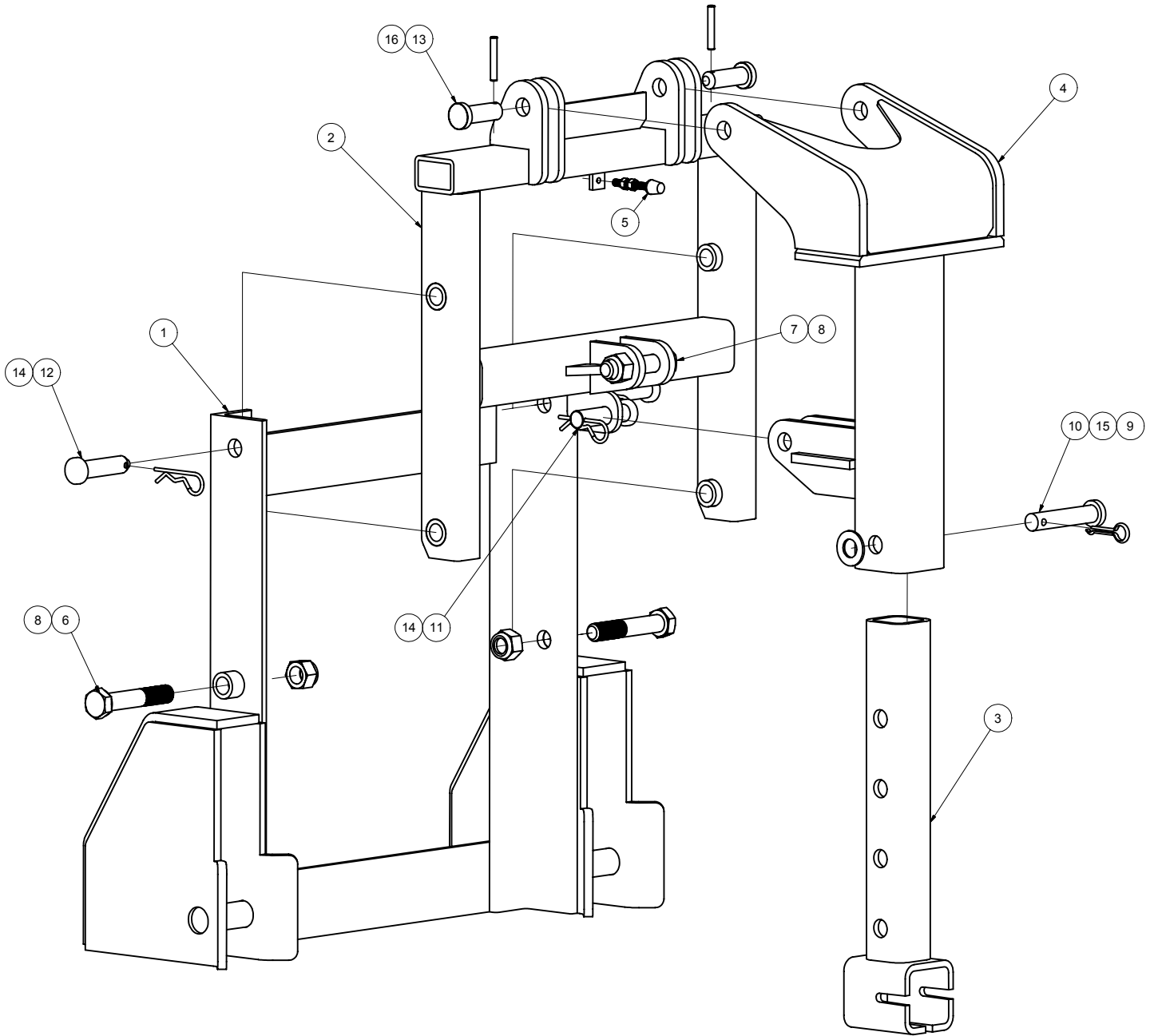
- A. 36R10, 36R11, 36R12
- B. 41R10, 41R11, 41R12
- C. 48R10, 48R11, 48R12

2. MW One-way plows

B. Tubular push frame plows:

- 1. One-way @ 18" to 20"
- 2. FE @ 18" to 20"
- 3. J-plow @ 20" to 22"
- 4. Flex plow @ 18" to 20"

UNIVERSAL TILT UQH HITCH ASSEMBLY (S7016)



ITEM	DRAWING NO.	ALT. ITEM NO.	DESCRIPTION	QTY
1	20303003		TILT UQH LOWER WELDMENT	1
2	20303004		UPPER TILT WELDMENT	1
3	20303001		INNER ARM WELDMENT	1
4	20303000		LIFT ARM WELDMENT	1
5	20427000		CYLINDER RETAINING STOP	1
6	281029		BOLT HEX 1 X 5 1/2 UNC ZINC	2
7	281022A	81022	BOLT HEX 1 X 4 1/2 UNC ZINC	1
8	237278		NUT HEX TOPLOCK 1 UNC ZINC	3
9	281013A	81013A	FLATWASHER SAE 1 ZINC	1
10	20P054		PIN 1" X 5 1/2"	1
11	3SK3410		PIN 1 X 4	1
12	20900004		PIN 1.000 DIA X 3.406	2
13	20P148A		PIN 1 X 3	2
14	3SK3460	80536	COTTER HAIRPIN 3/16 X 3 3/4 ZINC	3
15	280536A	80536A	CLINCH PIN 5/16 X 1 1/4 ZINC	1
16	280569A		ROLL PIN 3/8 X 2 1/2 ZINC	2

EQUIPMENT MAY NOT BE EXACTLY AS SHOWN. SOME COMPONENTS MAY BE OPTIONAL.
TO MAINTAIN OUR ON-GOING PRODUCT AND DEVELOPMENT IMPROVEMENT PROGRAM, VIKING-CIVES RESERVES THE RIGHT TO CHANGE EQUIPMENT & SPECIFICATION WITHOUT NOTICE.

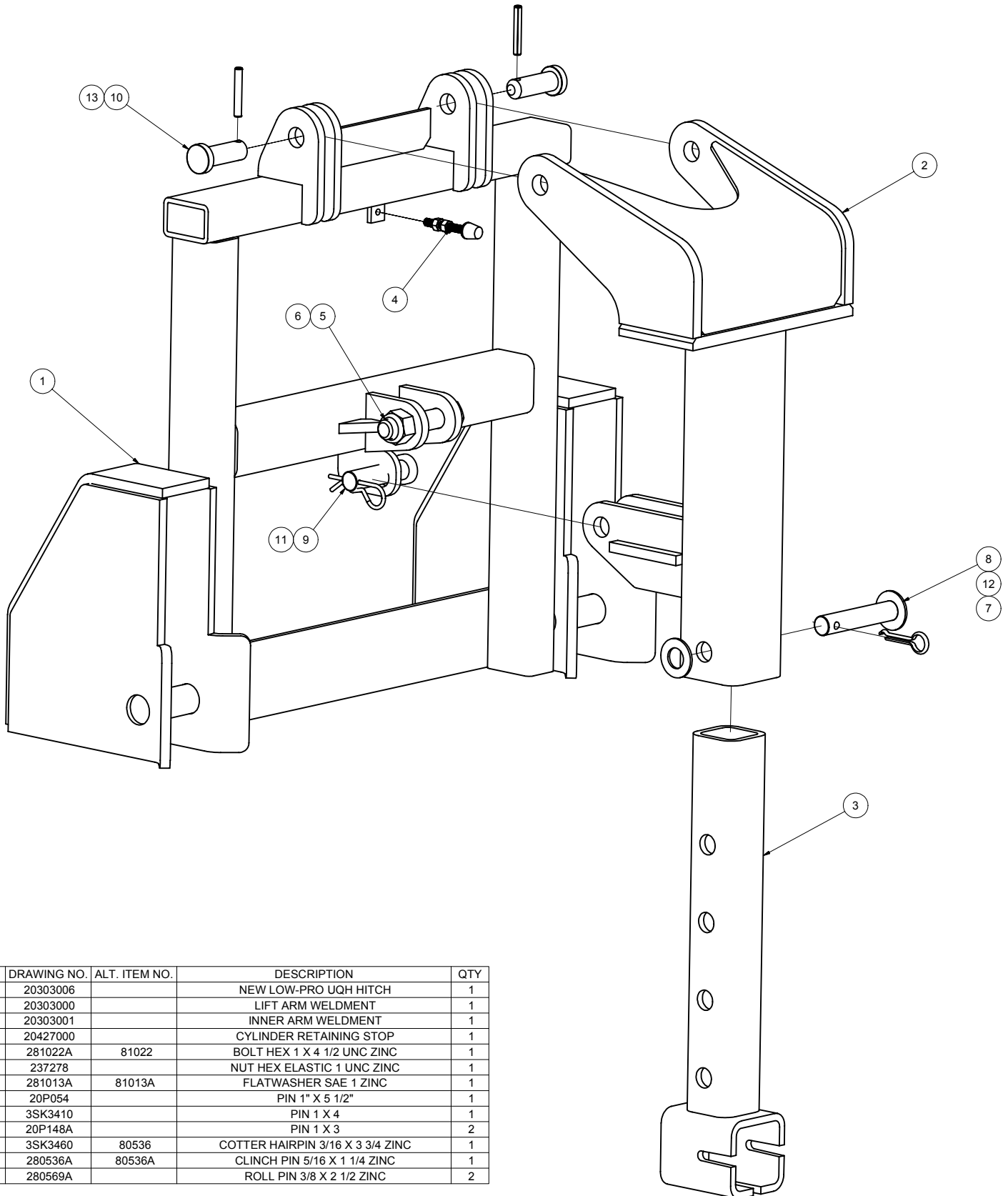


22956 Highway 61 ♦ Morley, MO 63767 ♦ Phone 573-262-3545 ♦ Fax 573-262-3369

S7016: TILT UQH HITCH ASSEMBLY

<u>ITEM #</u>	<u>PART #</u>	<u>DESCRIPTION</u>	<u>QTY</u>
1	20303003	TILT UQH LOWER WELDMENT	1
2	20303004	UPPER TILT WELDMENT	1
3	20303001	INNER ARM WELDMENT	1
4	20303000	LIFT ARM WELDMENT	1
5	20427000	CYLINDER RETAINING STOP	1
6	281029	BOLT HEX 1" X 5 1/2" UNC ZINC	2
7	281022A	BOLT HEX 1" X 4 1/2" UNC ZINC	1
8	237278	NUT HEX 1" X 4 1/2" UNC ZINC	3
9	281013A	FLAT WASHER SAE 1" ZINC	1
10	20P054	PIN 1" X 4 5/8" CH	1
11	3SK3410	PIN 1" X 4"	1
12	20900004	PIN 1.000 DIA X 3.406	2
13	20P148A	PIN 1" X 3"	2
14	3SK3460	COTTER HAIRPIN 3/16" X 3 3/4" ZINC	3
15	280536A	CLINCH PIN 5/16" X 1 1/4" ZINC	1
16	280569A	ROLL PIN 3/8" X 2 1/2" ZINC	2

UNIVERSAL LO-PRO UQH HITCH ASSEMBLY (S7006)



ITEM	DRAWING NO.	ALT. ITEM NO.	DESCRIPTION	QTY
1	20303006		NEW LOW-PRO UQH HITCH	1
2	20303000		LIFT ARM WELDMENT	1
3	20303001		INNER ARM WELDMENT	1
4	20427000		CYLINDER RETAINING STOP	1
5	281022A	81022	BOLT HEX 1 X 4 1/2 UNC ZINC	1
6	237278		NUT HEX ELASTIC 1 UNC ZINC	1
7	281013A	81013A	FLATWASHER SAE 1 ZINC	1
8	20P054		PIN 1" X 5 1/2"	1
9	3SK3410		PIN 1 X 4	1
10	20P148A		PIN 1 X 3	2
11	3SK3460	80536	COTTER HAIRPIN 3/16 X 3 3/4 ZINC	1
12	280536A	80536A	CLINCH PIN 5/16 X 1 1/4 ZINC	1
13	280569A		ROLL PIN 3/8 X 2 1/2 ZINC	2

EQUIPMENT MAY NOT BE EXACTLY AS SHOWN. SOME COMPONENTS MAY BE OPTIONAL TO MAINTAIN OUR ON-GOING PRODUCT AND DEVELOPMENT IMPROVEMENT PROGRAM, VIKING-CIVES RESERVES THE RIGHT TO CHANGE EQUIPMENT & SPECIFICATION WITHOUT NOTICE.

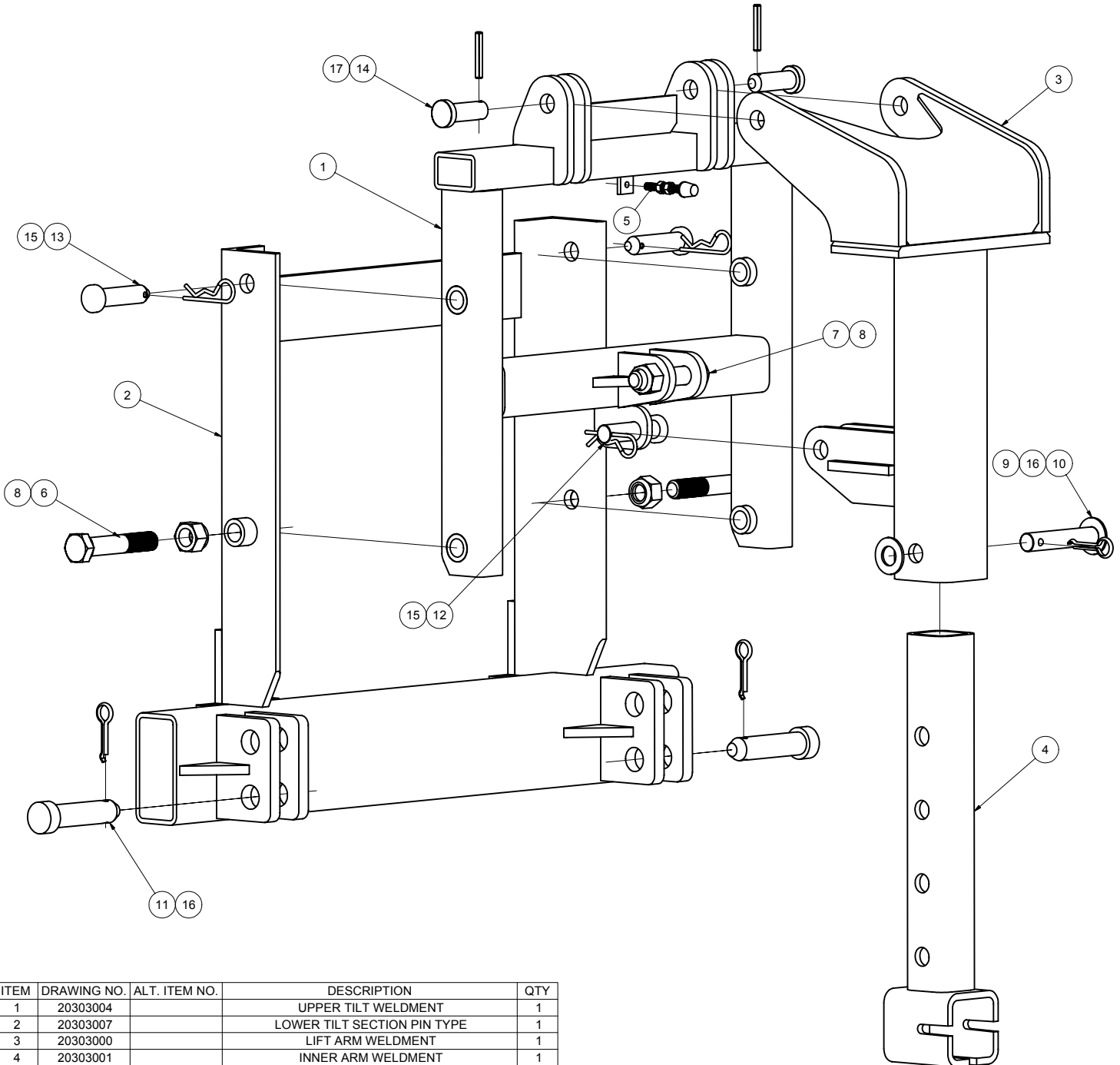


22956 Highway 61 ♦ Morley, MO 63767 ♦ Phone 573-262-3545 ♦ Fax 573-262-3369

S7006: LO-PRO UQH HITCH ASSEMBLY

<u>ITEM #</u>	<u>PART #</u>	<u>DESCRIPTION</u>	<u>QTY</u>
1	20303006	NEW LO-PRO UQH HITCH	1
2	20303000	LIFT ARM WELDMENT	1
3	20303001	INNER ARM WELDMENT	1
4	20427000	CYLINDER RETAINING STOP	1
5	281022A	BOLT HEX 1" X 4 1/2" UNC ZINC	1
6	237278	NUT HEX ELASTIC 1" UNC ZINC	1
7	281013A	FLAT WASHER SAE 1" ZINC	1
8	20P054	PIN 1" X 4 5/8" CH	1
9	3SK3410	PIN 1" X 4"	1
10	20P148A	PIN 1" X 3"	2
11	3SK3460	COTTER HAIRPIN 3/16" X 3 3/4" ZINC	1
12	280536A	CLINCH PIN 5/16" X 1 1/4" ZINC	1
13	280569A	ROLL PIN 3/8" X 2 1/2" ZINC	2

UNIVERSAL TILT PIN TYPE HITCH ASSEMBLY (S7011)



ITEM	DRAWING NO.	ALT. ITEM NO.	DESCRIPTION	QTY
1	20303004		UPPER TILT WELDMENT	1
2	20303007		LOWER TILT SECTION PIN TYPE	1
3	20303000		LIFT ARM WELDMENT	1
4	20303001		INNER ARM WELDMENT	1
5	20427000		CYLINDER RETAINING STOP	1
6	281029		BOLT HEX 1 X 5 1/2 UNC ZINC	2
7	281022A	81022	BOLT HEX 1 X 4 1/2 UNC ZINC	1
8	237278		NUT HEX ELASTIC 1 UNC ZINC	3
9	281013A	81013A	FLATWASHER SAE 1 ZINC	1
10	20P054		PIN 1" X 5 1/2"	1
11	20P010		PIN 1 1/4 X 4 3/8 UH	2
12	3SK3410		PIN 1 X 4	1
13	20900004		PIN 1.000 DIA X 3.406	2
14	20P148A		PIN 1 X 3	2
15	3SK3460	80536	COTTER HAIRPIN 3/16 X 3 3/4 ZINC	3
16	280536A	80536A	CLINCH PIN 5/16 X 1 1/4 ZINC	3
17	280569A		ROLL PIN 3/8 X 2 1/2 ZINC	2

EQUIPMENT MAY NOT BE EXACTLY AS SHOWN. SOME COMPONENTS MAY BE OPTIONAL TO MAINTAIN OUR ON-GOING PRODUCT AND DEVELOPMENT IMPROVEMENT PROGRAM, VIKING-CIVES RESERVES THE RIGHT TO CHANGE EQUIPMENT & SPECIFICATION WITHOUT NOTICE.

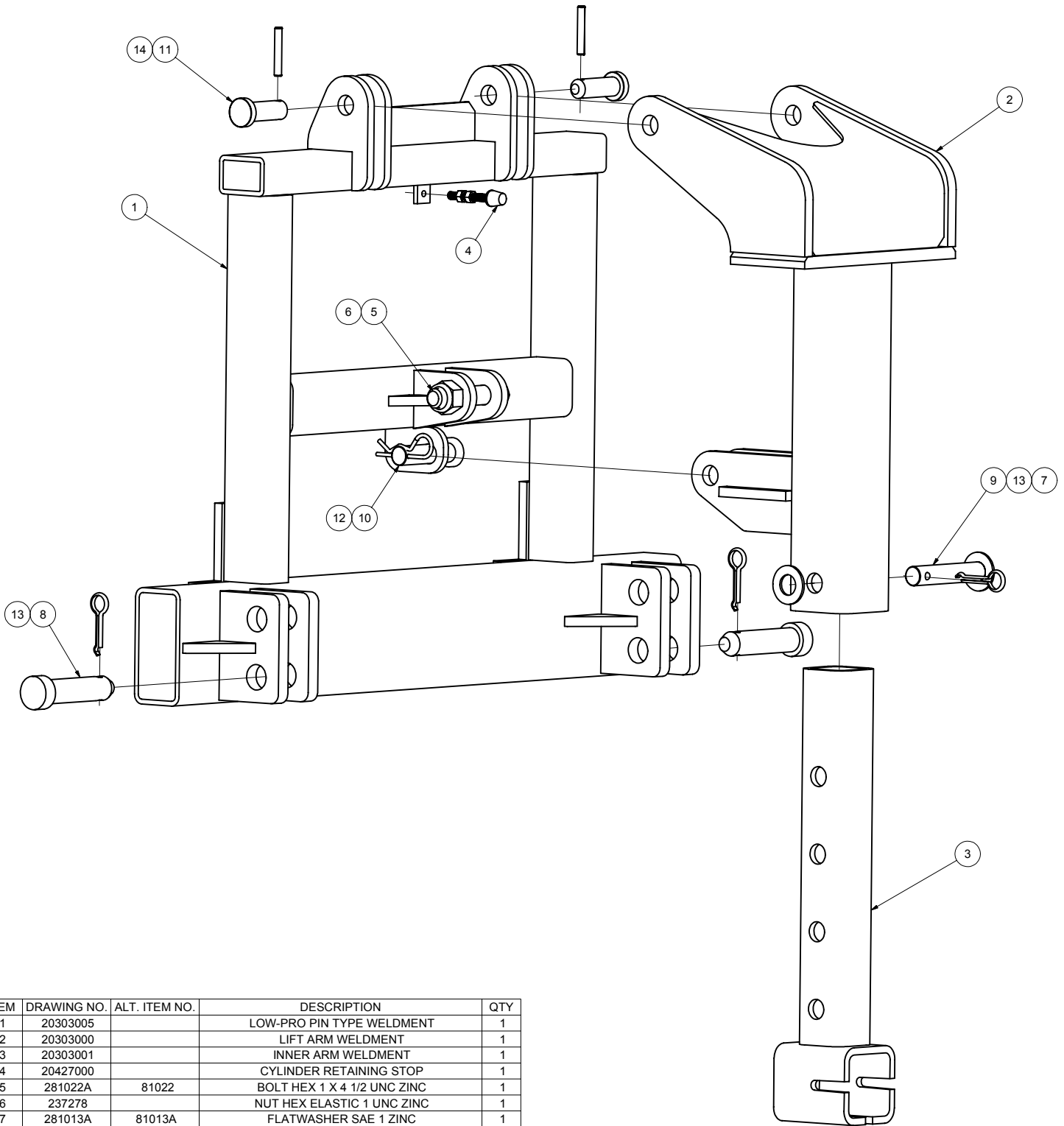


22956 Highway 61 ♦ Morley, MO 63767 ♦ Phone 573-262-3545 ♦ Fax 573-262-3369

S7011: TILT PIN TYPE HITCH ASSEMBLY

<u>ITEM #</u>	<u>PART #</u>	<u>DESCRIPTION</u>	<u>QTY</u>
1	20303004	UPPER TILT WELDMENT	1
2	20303007	LOWER TILT SECTION PIN TYPE	1
3	20303000	LIFT ARM WELDMENT	1
4	20303001	INNER ARM WELDMENT	1
5	20427000	CYLINDER RETAINING STOP	1
6	281029	BOLT HEX 1" X 5 1/2" UNC ZINC	2
7	281022A	BOLT HEX 1" X 4 1/2" UNC ZINC	1
8	237278	NUT HEX ELASTIC 1" UNC ZINC	3
9	281013A	FLAT WASHER SAE 1" ZINC	1
10	20P054	PIN 1" X 4 5/8" CH	1
11	20P010	PIN 1 1/4" X 4 3/8" UH	2
12	3SK3410	PIN 1" X 4"	1
13	20900004	PIN 1.000 DIA X 3.406	2
14	20P148A	PIN 1" X 3"	2
15	3SK3460	COTTER HAIRPIN 3/16" X 3 3/4" ZINC	3
16	280536A	CLINCH PIN 5/16" X 1 1/4" ZINC	3
17	280569A	ROLL PIN 3/8" X 2 1/2" ZINC	2

UNIVERSAL LO-PRO PIN TYPE HITCH ASSEMBLY (S7001)



ITEM	DRAWING NO.	ALT. ITEM NO.	DESCRIPTION	QTY
1	20303005		LOW-PRO PIN TYPE WELDMENT	1
2	20303000		LIFT ARM WELDMENT	1
3	20303001		INNER ARM WELDMENT	1
4	20427000		CYLINDER RETAINING STOP	1
5	281022A	81022	BOLT HEX 1 X 4 1/2 UNC ZINC	1
6	237278		NUT HEX ELASTIC 1 UNC ZINC	1
7	281013A	81013A	FLATWASHER SAE 1 ZINC	1
8	20P010		PIN 1 1/4 X 4 3/8 UH	2
9	20P054		PIN 1" X 5 1/2"	1
10	3SK3410		PIN 1 X 4	1
11	20P148A		PIN 1 X 3	2
12	3SK3460	80536	COTTER HAIRPIN 3/16 X 3 3/4 ZINC	1
13	280536A	80536A	CLINCH PIN 5/16 X 1 1/4 ZINC	3
14	280569A		ROLL PIN 3/8 X 2 1/2 ZINC	2

EQUIPMENT MAY NOT BE EXACTLY AS SHOWN. SOME COMPONENTS MAY BE OPTIONAL TO MAINTAIN OUR ON-GOING PRODUCT AND DEVELOPMENT IMPROVEMENT PROGRAM, VIKING-CIVES RESERVES THE RIGHT TO CHANGE EQUIPMENT & SPECIFICATION WITHOUT NOTICE.

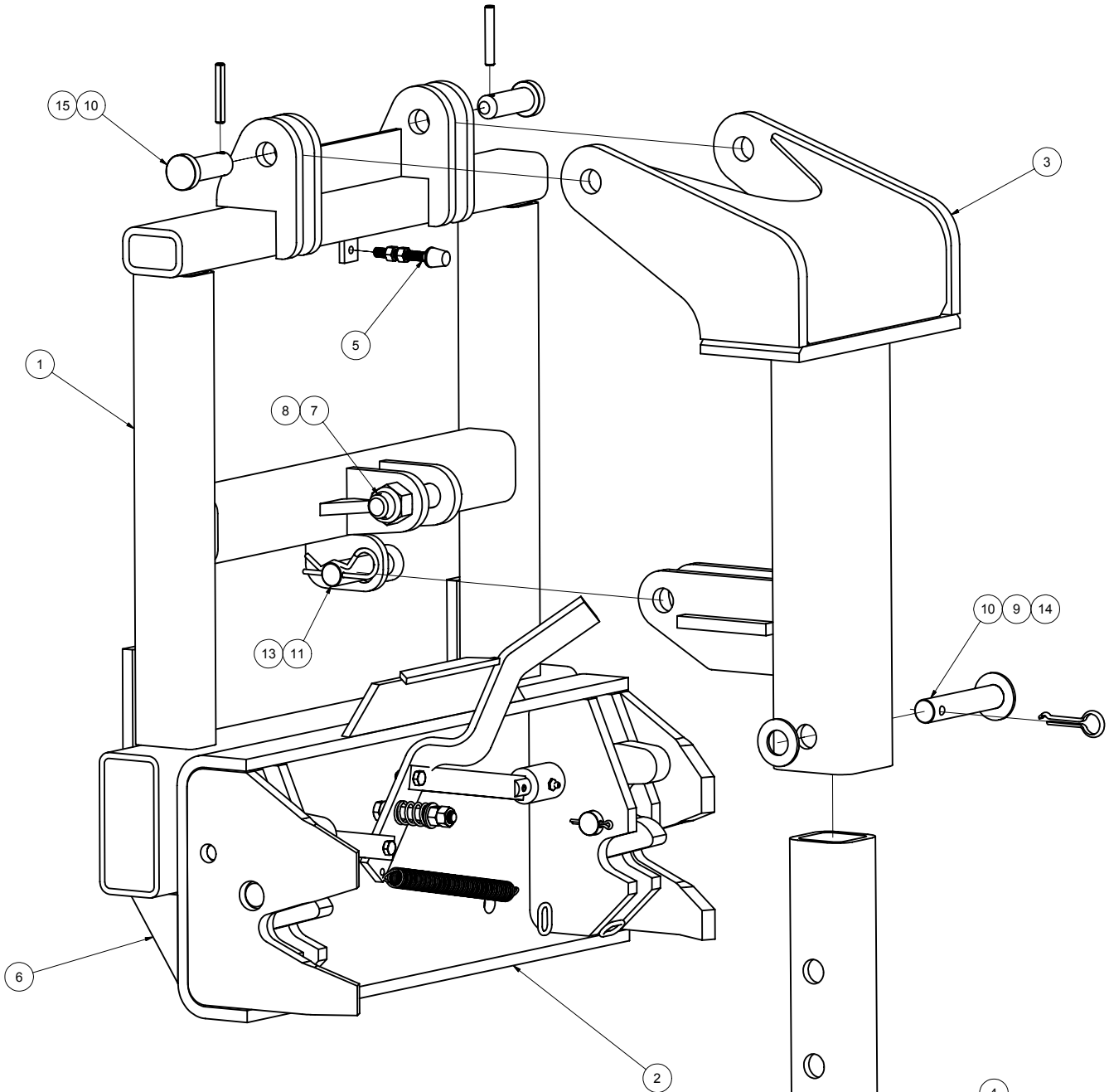


22956 Highway 61 ♦ Morley, MO 63767 ♦ Phone 573-262-3545 ♦ Fax 573-262-3369

S7001: LO-PRO PIN TYPE HITCH ASSEMBLY

<u>ITEM #</u>	<u>PART #</u>	<u>DESCRIPTION</u>	<u>QTY</u>
1	20303005	LO-PRO PIN TYPE WELDMENT	1
2	20303000	LIFT ARM WELDMENT	1
3	20303001	INNER ARM WELDMENT	1
4	20427000	CYLINDER RETAINING STOP	1
5	281022A	BOLT HEX 1" X 4 1/2" UNC ZINC	1
6	237278	NUT HEX ELASTIC 1" UNC ZINC	1
7	281013A	FLAT WASHER SAE 1" ZINC	1
8	20P010	PIN 1 1/4" X 4 3/8" UH	2
9	20P054	PIN 1" X 4 5/8" CH	1
10	3SK3410	PIN 1" X 4"	1
11	20P148A	PIN 1" X 3"	2
12	3SK3460	COTTER HAIRPIN 3/16" X 3 3/4" ZINC	1
13	280536A	CLINCH PIN 5/16" X 1 1/4" ZINC	3
14	280569A	ROLL PIN 3/8" X 2 1/2" ZINC	2

LO-PRO FLINK HITCH ASSEMBLY (S7004)



ITEM	DRAWING NO.	ALT. ITEM NO.	DESCRIPTION	QTY
1	20303011		LOW-PRO QUICK LOOP OR FLINK HITCH BLANK	1
2	2FLKSWIV-T		FLINK QUICK LINK RECIEVER	1
3	20303000		LIFT ARM WELDMENT	1
4	20303001		INNER ARM WELDMENT	1
5	20427000		CYLINDER RETAINING STOP	1
6	20312013		LO-PRO FLINK HITCH GUSSET	3
7	281022A	81022	BOLT HEX 1 X 4 1/2 UNC ZINC	1
8	237278		NUT HEX ELASTIC 1 UNC ZINC	1
9	281013A	81013A	FLATWASHER SAE 1 ZINC	1
10	20P054		PIN 1" X 5 1/2"	1
11	3SK3410		PIN 1 X 4	1
12	20P148A		PIN 1 X 3	2
13	3SK3460	80536	COTTER HAIRPIN 3/16 X 3 3/4 ZINC	1
14	280536A	80536A	CLINCH PIN 5/16 X 1 1/4 ZINC	1
15	280569A		ROLL PIN 3/8 X 2 1/2 ZINC	2

EQUIPMENT MAY NOT BE EXACTLY AS SHOWN. SOME COMPONENTS MAY BE OPTIONAL.
TO MAINTAIN OUR ON-GOING PRODUCT AND DEVELOPMENT IMPROVEMENT PROGRAM, VIKING-CIVES RESERVES THE RIGHT TO CHANGE EQUIPMENT & SPECIFICATION WITHOUT NOTICE.

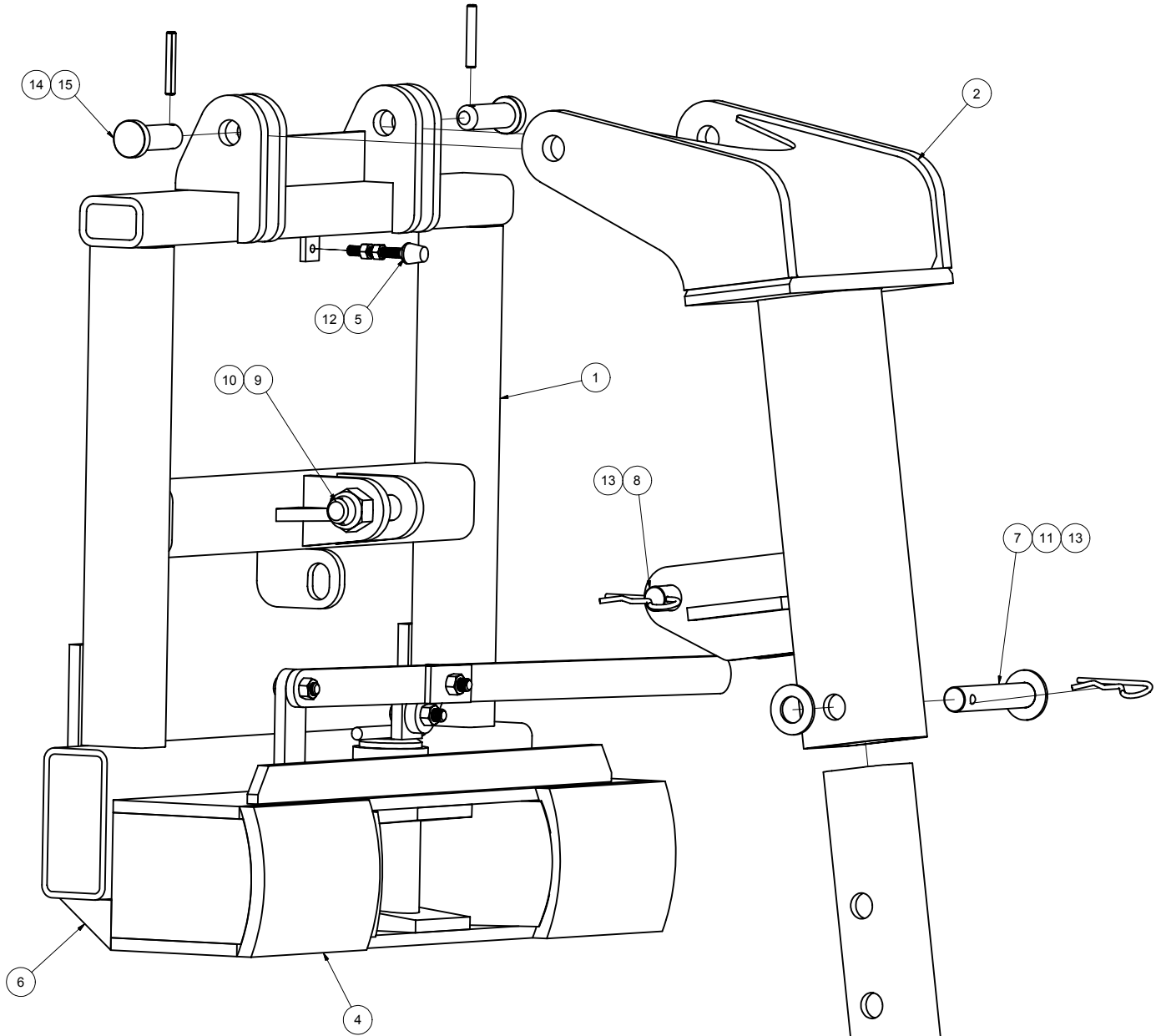


22956 Highway 61 ♦ Morley, MO 63767 ♦ Phone 573-262-3545 ♦ Fax 573-262-3369

S7004: LO-PRO FLINK HITCH ASSEMBLY

<u>ITEM #</u>	<u>PART #</u>	<u>ALT PART #</u>	<u>DESCRIPTION</u>	<u>QTY</u>
1	20303011		Lo-pro quick lop or Flink hitch blank	1
2	2FLKSWIV-T		Flink quick link receiver	1
3	2030300		Lift arm weldment	1
4	20303001		Inner arm weldment	1
5	20427000		Cylinder retaining stop	1
6	20312013		Lo-pro Flink hitch gusset	3
7	281022A	81022	Bolt hex 1 x 4 ½ unc zinc	1
8	237278		Nut hex elastic 1 unc zinc	1
9	281013A	81013A	Flatwasher sae 1 zinc	1
10	20P054		Pin 1" x 5 ½"	1
11	3SK3410		Pin 1 x 4	1
12	20P148A		Pin 1 x 3	2
13	3SK3460	80536	Cotter hair pin 3/16 x 3 ¾ zinc	1
14	280536A	80536A	Clinch pin 5/16 x 1 ¼ zinc	1
15	280569A		Roll pin 3/8 x 2 ½ zinc	2

LO-PRO QUICK LOOP HITCH ASSEMBLY S7003



ITEM	DRAWING NO.	ALT. ITEM NO.	DESCRIPTION	QTY
1	20303011		LOW-PRO QUICK LOOP OR FLINK HITCH BLANK	1
2	20303000		LIFT ARM WELDMENT	1
3	20303001		INNER ARM WELDMENT	1
4	20260042A		PIN RECEIVER ASSEMBLY	1
5	20427000		CYLINDER RETAINING STOP	1
6	20312012		LO PRO QUICK LOOP HITCH GUSSET	3
7	20P054		PIN 1 X 4 5/8 CH	1
8	3SK3410		PIN 1" X 4"	1
9	281022A	81022	BOLT HEX 1 X 4 1/2 UNC ZINC	1
10	237278		NUT HEX TOPLOCK 1" UNC ZINC	1
11	281013A	81013A	FLATWASHER SAE 1" ZINC	1
12	HW30A-06		NUT HEX 3/8 UNC ZINC	2
13	3SK3460	80536	COTTER HAIRPIN 3/16" X 3 3/4" ZINC	2
14	280569A		ROLL PIN 3/8 X 2 1/2 ZINC	2
15	20P148A		PIN 1 X 3	2

EQUIPMENT MAY NOT BE EXACTLY AS SHOWN. SOME COMPONENTS MAY BE OPTIONAL.
TO MAINTAIN OUR ON-GOING PRODUCT AND DEVELOPMENT IMPROVEMENT PROGRAM, VIKING-CIVES RESERVES THE RIGHT TO CHANGE EQUIPMENT & SPECIFICATION WITHOUT NOTICE.

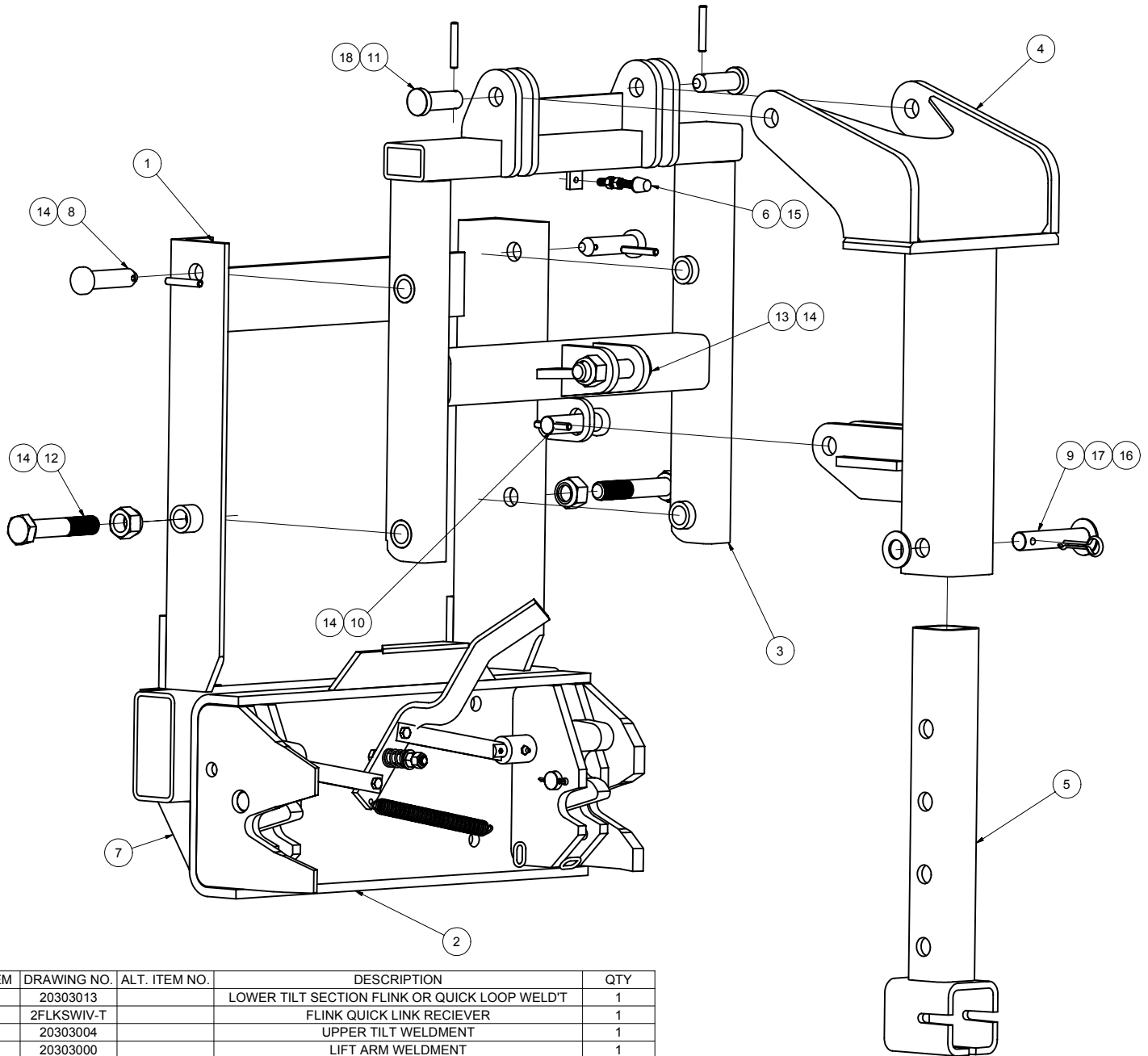


22956 Highway 61 ♦ Morley, MO 63767 ♦ Phone 573-262-3545 ♦ Fax 573-262-3369

S7003: LO-PRO QUICK LOOP HITCH ASSEMBLY

<u>ITEM #</u>	<u>PART #</u>	<u>ALT PART #</u>	<u>DESCRIPTION</u>	<u>QTY</u>
1	20303011		Lo-pro quick loop or Flink blank hitch	1
2	20303000		Lift arm weldment	1
3	20303001		Inner arm weldment	1
4	202600042A		Pin receiver assembly	1
5	20427000		Cylinder retaining stop	1
6	20312012		Lo-pro quick loop hitch gusset	3
7	20P054		Pin 1 x 4 5/8 CH	1
8	3SK3410		Pin 1 x 4	1
9	281022A	81022	Bolt hex 1 x 4 1/2 unc zinc	1
10	237278		Nut hex toplock 1" unc zinc	1
11	281013A	81013A	Flatwasher sae 1" zinc	1
12	HW30A-06		Nut hex 3/8 unc zinc	2
13	3SK3460	80536	Cotter hairpin 3/16 x 3 3/4 zinc	2
14	280569A		Roll pin 3/8 x 2 1/2 zinc	2
15	20P148A		Pin 1 x 3	2

UNIVERSAL TILT FLINK HITCH ASSEMBLY (S7014)



ITEM	DRAWING NO.	ALT. ITEM NO.	DESCRIPTION	QTY
1	20303013		LOWER TILT SECTION FLINK OR QUICK LOOP WELD'T	1
2	2FLKSWIV-T		FLINK QUICK LINK RECIEVER	1
3	20303004		UPPER TILT WELDMENT	1
4	20303000		LIFT ARM WELDMENT	1
5	20303001		INNER ARM WELDMENT	1
6	20427000		CYLINDER RETAINING STOP	1
7	20312013		LO-PRO FLINK HITCH GUSSET	3
8	20900004		PIN 1.000 DIA X 3.406	2
9	20P054		PIN 1" X 5 1/2"	1
10	3SK3410		PIN 1 X 4	1
11	20P148A		PIN 1 X 3	2
12	281029		BOLT HEX 1 X 5 1/2 UNC ZINC	2
13	281022A	81022	BOLT HEX 1 X 4 1/2 UNC ZINC	1
14	237278		NUT HEX ELASTIC 1 UNC ZINC	3
15	HW30A-06		NUT HEX 3/8 UNC ZINC	2
16	281013A	81013A	FLATWASHER SAE 1 ZINC	1
17	280536A	80536A	CLINCH PIN 5/16 X 1 1/4 ZINC	1
18	3SK3460	80536	ROLL PIN 3/8 X 2 1/2 ZINC	5

EQUIPMENT MAY NOT BE EXACTLY AS SHOWN. SOME COMPONENTS MAY BE OPTIONAL.
TO MAINTAIN OUR ON-GOING PRODUCT AND DEVELOPMENT IMPROVEMENT PROGRAM, VIKING-CIVES RESERVES THE RIGHT TO CHANGE EQUIPMENT & SPECIFICATION WITHOUT NOTICE.

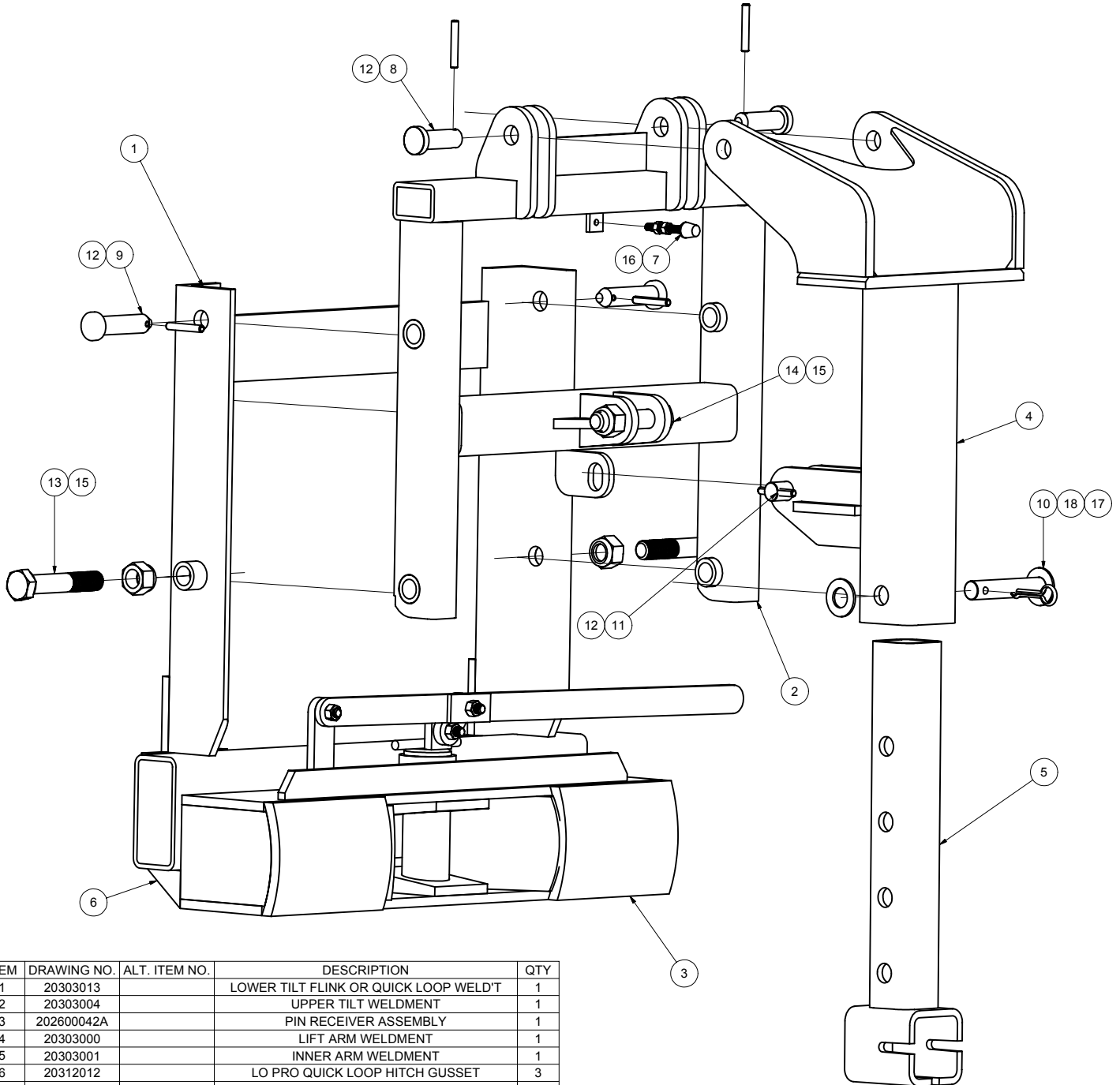


22956 Highway 61 ♦ Morley, MO 63767 ♦ Phone 573-262-3545 ♦ Fax 573-262-3369

S7014: UNIVERSAL TILT FLINK HITCH ASSEMBLY

<u>ITEM</u>	<u>PART #</u>	<u>ALT PART #</u>	<u>DESCRIPTION</u>	<u>QT Y</u>
1	20303013		Lower tilt section Flink or quick loop weld't	1
2	2FLKSWIV-T		Flink quick link receiver	1
3	20303004		Upper tilt weldment	1
4	20303000		Lift arm weldment	1
5	20303001		Inner arm weldment	1
6	20427000		Cylinder retaining stop	1
7	20312013		Lo-pro Flink hitch gusset	3
8	20900004		Pin 1.000 dia x 3.406	2
9	20P054		Pin 1 x 5 ½	1
10	3SK3410		Pin 1 x 4	1
11	20P148A		Pin 1 x 3	2
12	281029		Bolt hex 1 x 5 ½ unc zinc	2
13	281022A	81022	Bolt hex 1 x 4 ½ unc zinc	1
14	237278		Nut hex elastic 1 unc zinc	3
15	HW30A-06		Nut hex 3/8 unc zinc	2
16	281013A	81013A	Flatwasher sae 1 zinc	1
17	280536A	80536A	Clinch pin 5/16 x 1 ¼ zinc	1
18	3SK3460	80536	Roll pin 3/8 x 2 ½ zinc	5

UNIVERSAL TILT QUICK LOOP HITCH ASSEMBLY (S7013)



ITEM	DRAWING NO.	ALT. ITEM NO.	DESCRIPTION	QTY
1	20303013		LOWER TILT FLINK OR QUICK LOOP WELD'T	1
2	20303004		UPPER TILT WELDMENT	1
3	202600042A		PIN RECEIVER ASSEMBLY	1
4	20303000		LIFT ARM WELDMENT	1
5	20303001		INNER ARM WELDMENT	1
6	20312012		LO PRO QUICK LOOP HITCH GUSSET	3
7	20427000		CYLINDER RETAINING STOP	1
8	20P148A		PIN 1 X 3	2
9	20900004		PIN 1.000 DIA X 3.406	2
10	20P054		PIN 1 X 4 5/8 CH	1
11	3SK3410		PIN 1" X 4"	1
12	280569A		ROLL PIN 3/8 X 2 1/2 ZINC	5
13	281029		BOLT HEX 1 X 5 1/2 UNC ZINC	2
14	281022A	81022	BOLT HEX 1 X 4 1/2 UNC ZINC	1
15	237278		NUT HEX TOPLOCK 1" UNC ZINC	3
16	HW30A-06		NUT HEX 3/8 UNC ZINC	2
17	281013A	81013A	FLATWASHER SAE 1" ZINC	1
18	280536A	80536A	CLINCH PIN 5/16 X 1 1/4 ZINC	1

EQUIPMENT MAY NOT BE EXACTLY AS SHOWN. SOME COMPONENTS MAY BE OPTIONAL.
TO MAINTAIN OUR ON-GOING PRODUCT AND DEVELOPMENT IMPROVEMENT PROGRAM, VIKING-CIVES RESERVES THE RIGHT TO CHANGE EQUIPMENT & SPECIFICATION WITHOUT NOTICE.



22956 Highway 61 ♦ Morley, MO 63767 ♦ Phone 573-262-3545 ♦ Fax 573-262-3369

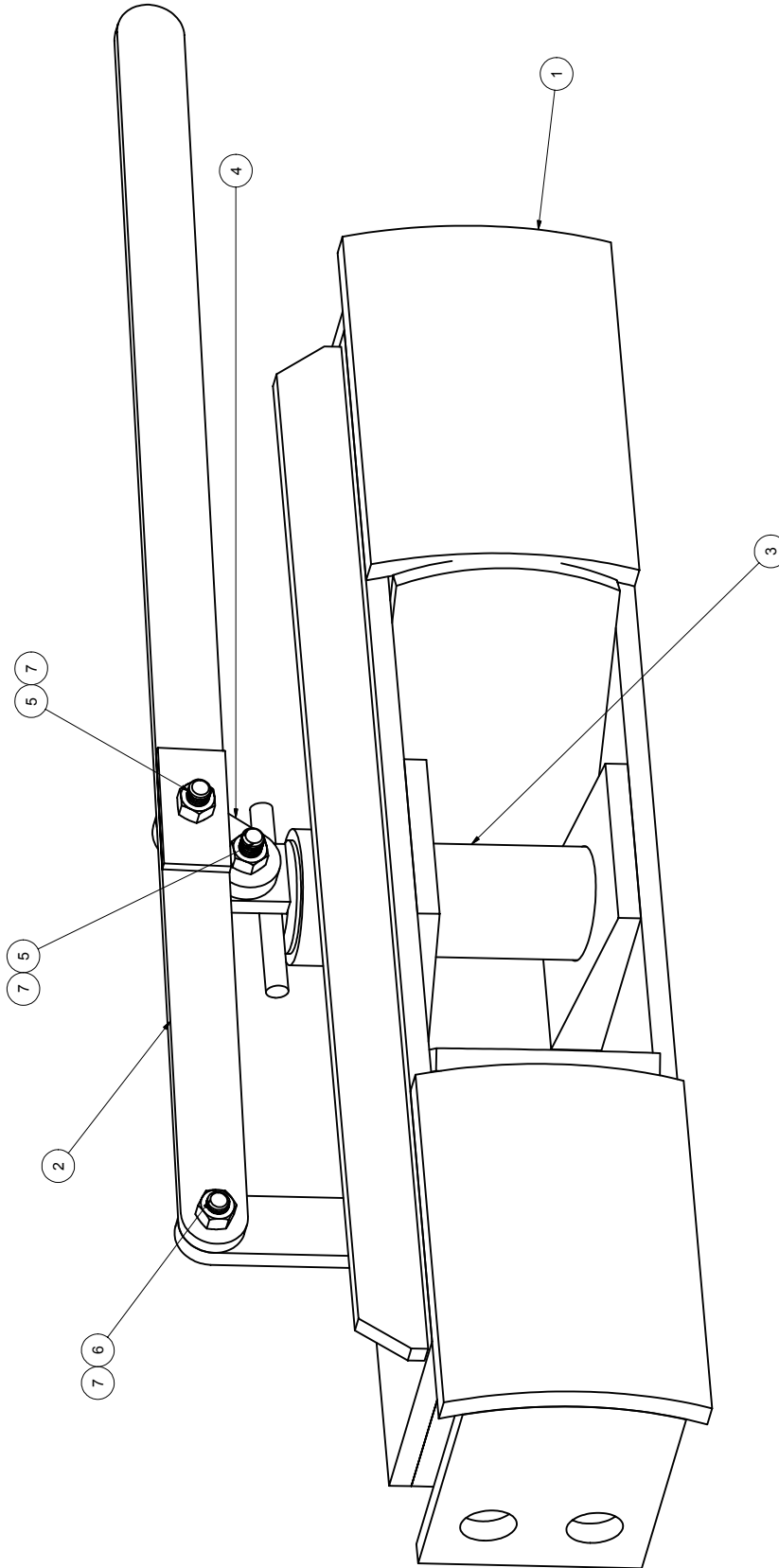
S7013: UNIVERSAL TILT QUICK LOOP HITCH ASSEMBLY

<u>ITEM #</u>	<u>PART #</u>	<u>ALT PART #</u>	<u>DESCRIPTION</u>	<u>QTY</u>
1	20303013		Lower tilt Flink or quick loop weld't	1
2	20303004		Upper tilt weldment	1
3	202600042A		Pin receiver assembly	1
4	20303000		Lift arm weldment	1
5	20303001		Inner arm weldment	1
6	20312012		Lo-pro quick loop hitch gusset	3
7	20427000		Cylinder retaining stop	1
8	20P148A		Pin 1 x 3	2
9	20900004		Pin 1.000 dia x 3.406	2
10	20P054		Pin 1 x 4 5/8 CH	1
11	3SK3410		Pin 1 x 4	1
12	280569A		Roll pin 3/8 x 2 ½ zinc	5
13	281029		Bolt hex 1 x 5 ½ unc zinc	2
14	281022A	81022	Bolt hex 1 x 4 ½ unc zinc	1
15	237278		Nut hex toplock 1" unc zinc	3
16	HW30A-06		Nut hex 3/8 unc zinc	2
17	281013A	81013A	Flatwasher sae 1" zinc	1
18	280536A	80536A	Clinch pin 5/16 x 1 ¼ zinc	1



22956 HWY 61 MORLEY, MO 63767 (573)262-3545 PH (573)262-3369 FX

PIN AND LOOP RECEIVER WITH OUTER LUGS S13300



ITEM	DRAWING NO.	ALT. ITEM NO.	DESCRIPTION	QTY
1	202603003		PIN AND LOOP WELDMENT	1
2	202603002		ARM WELDMENT	1
3	202603001		PIN WELDMENT	1
4	202600134		ARM CONNECTING LUG	1
5	3SK3670	81083	BOLT HEX 1/2" X 2 UNC ZINC	2
6	3SK3600		BOLT HEX 1/2" X 1 1/2" UNC ZINC	1
7	3SK3670		NUT HEX 1/2" UNC ZINC	3

EQUIPMENT MAY NOT BE EXACTLY AS SHOWN. SOME COMPONENTS MAY BE OPTIONAL.
TO MAINTAIN OUR ON-GOING PRODUCT AND DEVELOPMENT IMPROVEMENT PROGRAM, VIKING-CIVES RESERVES THE RIGHT TO CHANGE EQUIPMENT & SPECIFICATION WITHOUT NOTICE.

