



212 North Evans Road Evansdale, Iowa 50707 Phone (319) 236-7977; Fax (319) 236-7980

Owners Manual

UNIVERSAL TILT UQH HITCH & DOUBLE FUNCTION PATROL WING METRO 225

Unit Serial Number: _____



212 North Evans Road Evansdale, Iowa 50707 Phone (319) 236-7977; Fax (319) 236-7980

WARRANTY POLICY

Viking Cives, USA warrants products of its manufacture against defects in workmanship and material for a period of one year, from the date of shipment to the customer. In consequence of this warranty, any component part or parts of such products proving defective within the above specified time will be repaired or replaced F.O.B. factory. Providing such parts are returned, transportation prepaid, to the factory and found defective by Viking Cives, USA.

This warranty will not apply to any product which has been repaired or altered outside of Viking Cives, USA factory in any way, so as in Viking Cives, USA's judgment, to affect its stability or reliability, nor which has been subject to misuse or accident.

The obligations of Viking Cives, USA under this warranty are limited to the replacement of defective parts. Such obligations are exclusive and in lieu of all other remedies, warranties, guarantees of liabilities, expressed or implied, with respect to each product delivered, hereunder, arising by law or otherwise (including without limitation any obligation or liability by Viking Cives, USA arising from negligence or with respect to fitness, merchantability, loss of use, revenue, or profit, or consequential damages or injuries).

This limited warranty shall not be extended, altered, or varied except by a written instrument signed by Viking Cives, USA.

Viking Cives, USA assumes no responsibility for engines, electrical equipment or any other equipment and accessories not manufactured by Viking Cives, USA beyond the warranty of the manufacturer of such equipment of accessories.

All warranty work done on Viking Cives, USA equipment must have prior authorization from Viking Cives, USA along with a "**Return Goods Authorization**" number. All labor and parts issued by user for VIKING CIVES, USA warranty without an authorization number and a signed authorization warranty form will be at the users own cost.

ORDERING PARTS

Delays and errors can be eliminated when ordering instructions are followed correctly.

1. Place orders direct with Viking-Cives Group/nearest dealer.
2. State Company name, address, and postal/zip code.
3. Give the exact model and serial number of the equipment/unit (stamped on the unit identification plate.)
4. Furnish part number, description and quantities required. Print or type order clearly.
5. Give specific shipping instructions.



VIKING-CIVES (USA) Midwest Division – 212 North Evans Road; Evansdale, Iowa 50707; (319) 236-7977, (319) 236-7980 Fax
VIKING-CIVES LTD. – RR4, Box 1120; Mount Forest, Ontario, Canada N0G 2L0; (519) 323-4433, (519) 323-4608 Fax
VIKING-CIVES (USA) – RR2, Box 36-1/2; Harrisville, New York 13648; (315) 543-2321, (315) 543-2366 Fax



212 North Evans Road Evansdale, Iowa 50707 Phone (319) 236-7977; Fax (319) 236-7980

TABLE OF CONTENTS

<u>Description</u>	<u>Page</u>
Warranty Policy / Ordering Parts	2
Introduction	4
Periodic Maintenance Inspection	4
Daily Inspection and Lubrication	4
Drawing of Universal Tilt UQH Assembly	5
Parts Breakdown of Tilt UQH Assembly	6
Drawing of Universal Lift Arm Assembly	7
Parts Breakdown of Lift Arm Assembly	8
Drawing of Dual Arm MTG Kit	9
Parts Breakdown of Dual Arm MTG Kit	10
Drawing of Wing Installation on Truck	11
Parts Breakdown of Wing Installation on Truck	12
Drawing of MW Dual Arm 11' Cutting Edge Wing Assembly (NEB)	13
Parts Breakdown of MW Dual Arm 11' Cutting Edge Wing Assembly (NEB)	14
Drawing of Front Mast Assembly	15
Parts Breakdown of Front Mast Assembly	16
Drawing of MW 225 Full Trip Hinge	17
Parts Breakdown of MW 225 Full Trip Hinge	18
Drawing of Bracket Assembly Metro 3 Point	19
Parts Breakdown of Bracket Assembly Metro 3 Point	20
Drawing of Full Trip Upper Arm Assembly	21
Parts Breakdown of Full Trip Upper Arm Assembly	22
Drawing of Full Trip Lower Arm Assembly	23
Parts Breakdown of Full Trip Lower Arm Assembly	24
Installation and Adjustment of Hydraulic Wing	25
Installation and Adjustment of HD Wing	26
Safety Instructions	27



212 North Evans Road Evansdale, Iowa 50707 Phone (319) 236-7977; Fax (319) 236-7980

INTRODUCTION

This instruction/parts manual has operation and maintenance information for Viking-Cives **Universal Hitches**. It has been prepared to familiarize you with the design features of the unit, and to instruct you in its proper operation and maintenance.

Read this manual carefully before you operate and/or service your **MW Universal Hitches**. Remember that you're working with heavy equipment that can injure you or someone else. You can help lessen the chance of injury by following the procedures in this manual, carefully.

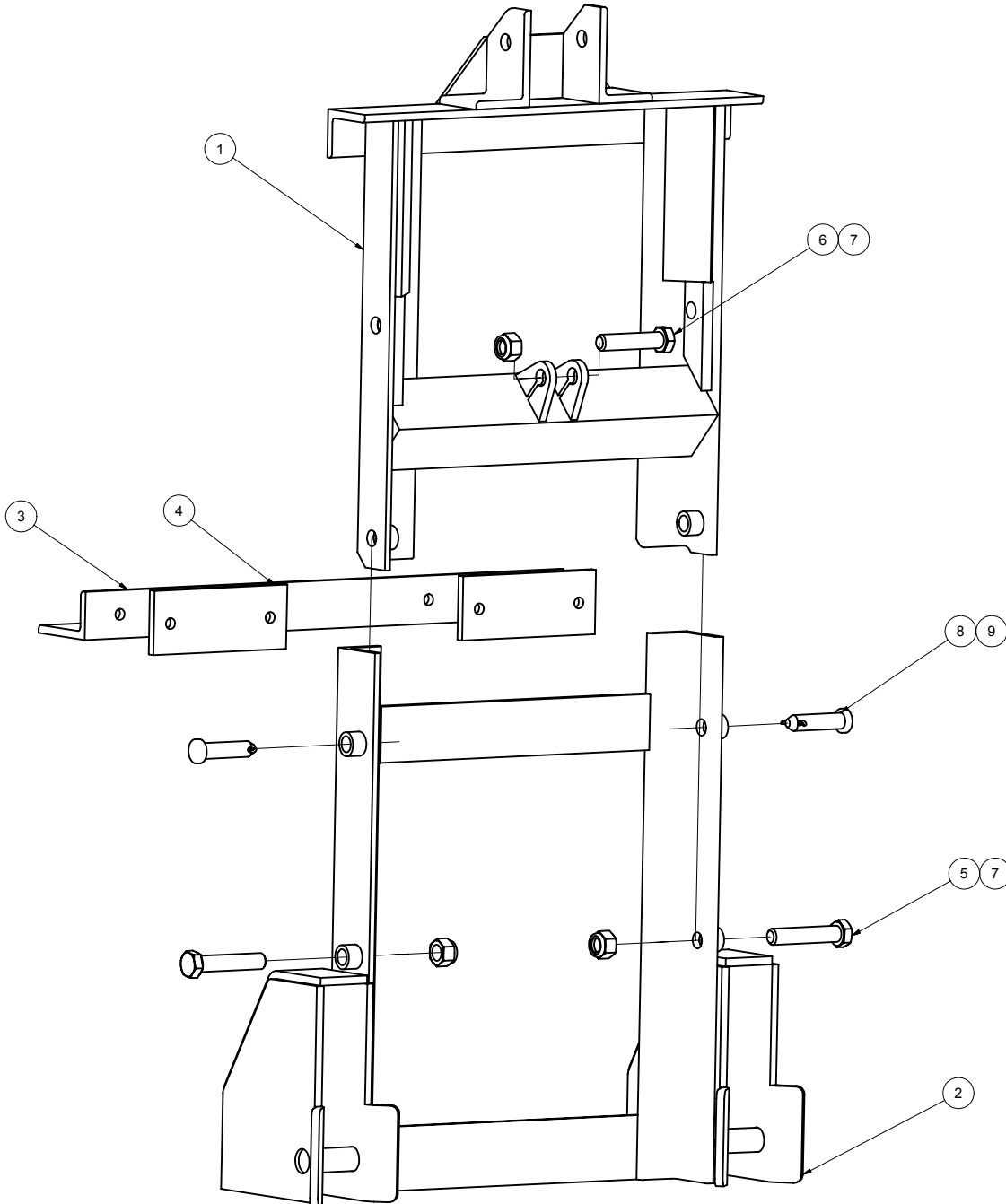
DANGER: If incorrectly used, this equipment can cause severe injury. Your chance of injury can be greatly reduced by following all caution/warning decal notifications. All decals must be kept clean and complete. Replace any decals that are unreadable. Decals may be purchased directly from Viking-Cives Group and/or the nearest authorized dealer. All Operator/Service people should review this manual carefully and become familiar with its contents. **If anyone else beside you operates or services this equipment, make sure they read this manual and are instructed to follow the safety procedures related to this equipment.**

PERIODIC MAINTENANCE INSPECTION AND DAILY INSPECTION AND LUBRICATION

Daily inspection along with periodic preventative maintenance will reduce the chance of any major repairs and down time during equipment use.

1. Check the fluid level in the hydraulic oil reservoir. If the sight indicates low oil level, add the appropriate amount of the specified hydraulic fluid.
2. Grease all required components:
 - All plow harness sheave nipples
 - All pump drive shaft nipples
 - Front and Rear tower sheave swivel blocks
 - Wing extension arm nipples
 - Front and Rear tower guide tracks
 - All front harness pivot points
3. Check all components for loose and/or missing fasteners, if required tighten and/or replace.
4. Visually inspect all hydraulic connections and hoses for cracks and/or leaks.
5. Check all cables, chains and sheaves for excessive wear or damage.
6. Visually inspect plow and wing units. Check cutting edges and wear shoes. If cutting edge has excessive wear remove and rotate or if required replace. **CAUTION:** Do not allow cutting edge to wear down to mounting angle. Any wear to the mounting angle may affect the operation and safety of the equipment. Replacement is costly.
7. At the beginning of each shift visually inspect all caution and warning decals. All decals should be complete and legible. If decals are not legible, clean them. If cleaning the decals does not make them legible, install new decals.

UNIVERSAL TILT UQH HITCH ASSEMBLY (NEB)



ITEM	DRAWING NO.	ALT. ITEM NO.	DESCRIPTION	QTY
1	20122039		WELDMENT UPPER TILT SECTION	1
2	20122051		WELDMENT LOWER WITH UQH RECIEVER	1
3	20122027		ANGLE 3 X 5 X 1/2 - 36	1
4	21405037		PLATE 4.000 X 10.000 X 0.500	2
5	281029		BOLT HEX 1 X 5 1/2 UNC ZINC	2
6	281022A	81022	BOLT HEX 1 X 4 1/2 UNC ZINC	1
7	237278		NUT HEX TOPLOCK 1" UNC ZINC	3
8	20900004		PIN 1.000 DIA X 3.406	2
9	3SK3450	80508A	COTTER PIN 1/4 X 2 1/2 ZINC	2

EQUIPMENT MAY NOT BE EXACTLY AS SHOWN. SOME COMPONENTS MAY BE OPTIONAL
 TO MAINTAIN OUR ON-GOING PRODUCT AND DEVELOPMENT IMPROVEMENT PROGRAM, VIKING-CIVES RESERVES THE RIGHT TO CHANGE EQUIPMENT & SPECIFICATION WITHOUT NOTICE.



212 North Evans Road Evansdale, Iowa 50707 Phone (319) 236-7977; Fax (319) 236-7980

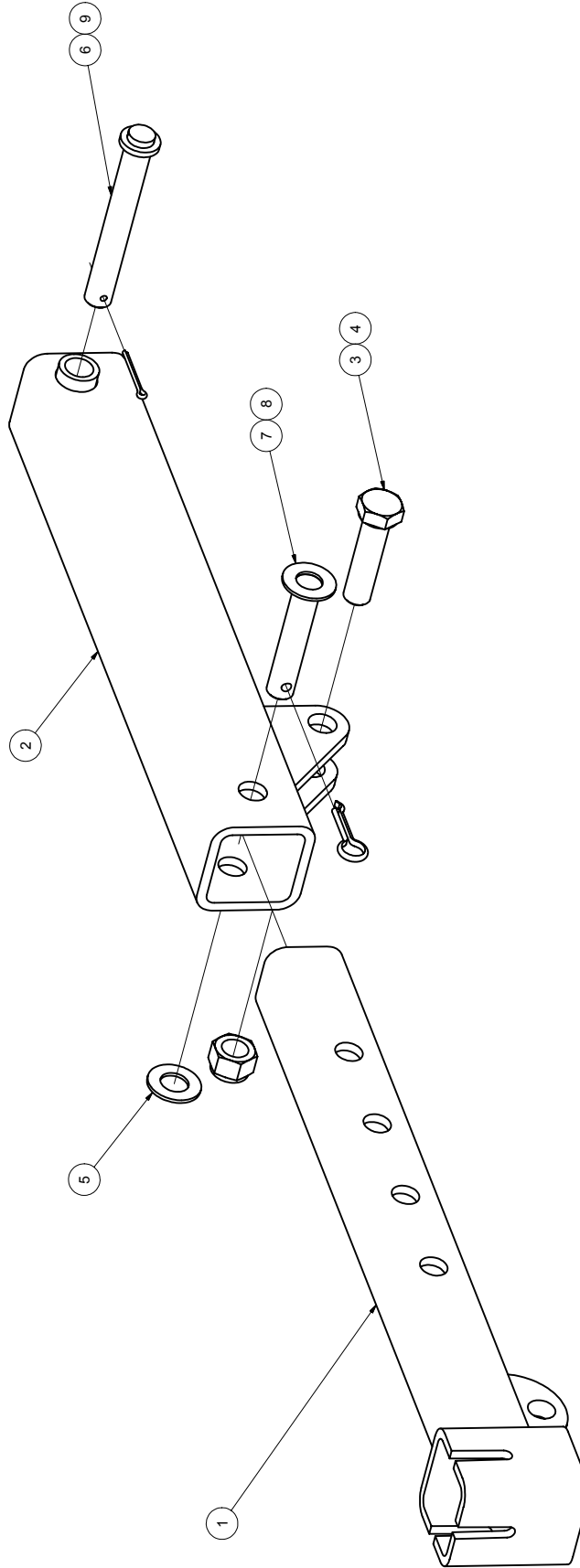
UNIVERSAL TILT UQH HITCH ASSEMBLY (NEB)

<u>ITEM #</u>	<u>PART #</u>	<u>ALT ITEM #</u>	<u>DESCRIPTION</u>	<u>QTY</u>
1	20122039		WELDMENT UPPER TILT SECTION	1
2	20122051		WELDMENT LOWER TILT UQH	1
3	20122027		ANGLE 3 X 5 X ½ - 36	1
4	21405037		PLATE 4.000 X 10.000 X 0.500	2
5	281029		BOLT HEX 1 X 5 ½ UNC ZINC	2
6	281022A	81022	BOLT HEX 1 X 4 ½ UNC ZINC	1
7	237278		NUT HEX TOPLOCK 1" UNC ZINC	3
8	20900004		PIN 1.000 DIA X 3.406	2
9	3SK3450	80508A	COTTER PIN ¼ X 2 ½ ZINC	2



212 NORTH EVANS ROAD, EVANSDALE, IOWA 50707 (319)236-7977 PH (319)236-7980 FX

UNIVERSAL LIFT ARM ASSEMBLY (NEB)



ITEM	DRAWING NO.	ALT.	ITEM NO.	DESCRIPTION	QTY
1	200119003-2			WELDMENT - INNER LIFT ARM TUBE	1
2	20303014			WELDMENT - OUTER LIFT ARM TUBE	1
3	281022	81022		BOLT HEX 1 X 4 UNC ZINC	1
4	237278			NUT HEX TOPLOCK 1" UNC ZINC	1
5	281013A	81013A		FLATWASHER SAE 1" ZINC	1
6	20P074			PIN 1 X 7 CH	1
7	20P054			PIN 1 X 4 5/8 CH	1
8	280536A	80536A		CLINCH PIN 5/16 X 1 1/4 ZINC	1
9	3SK3450	80508A		COTTER PIN 1/4 X 2 1/2 ZINC	1

TO MAINTAIN OUR ON-GOING PRODUCT AND DEVELOPMENT IMPROVEMENT PROGRAM, VIKING-CIVES RESERVES THE RIGHT TO CHANGE EQUIPMENT & SPECIFICATION WITHOUT NOTICE.

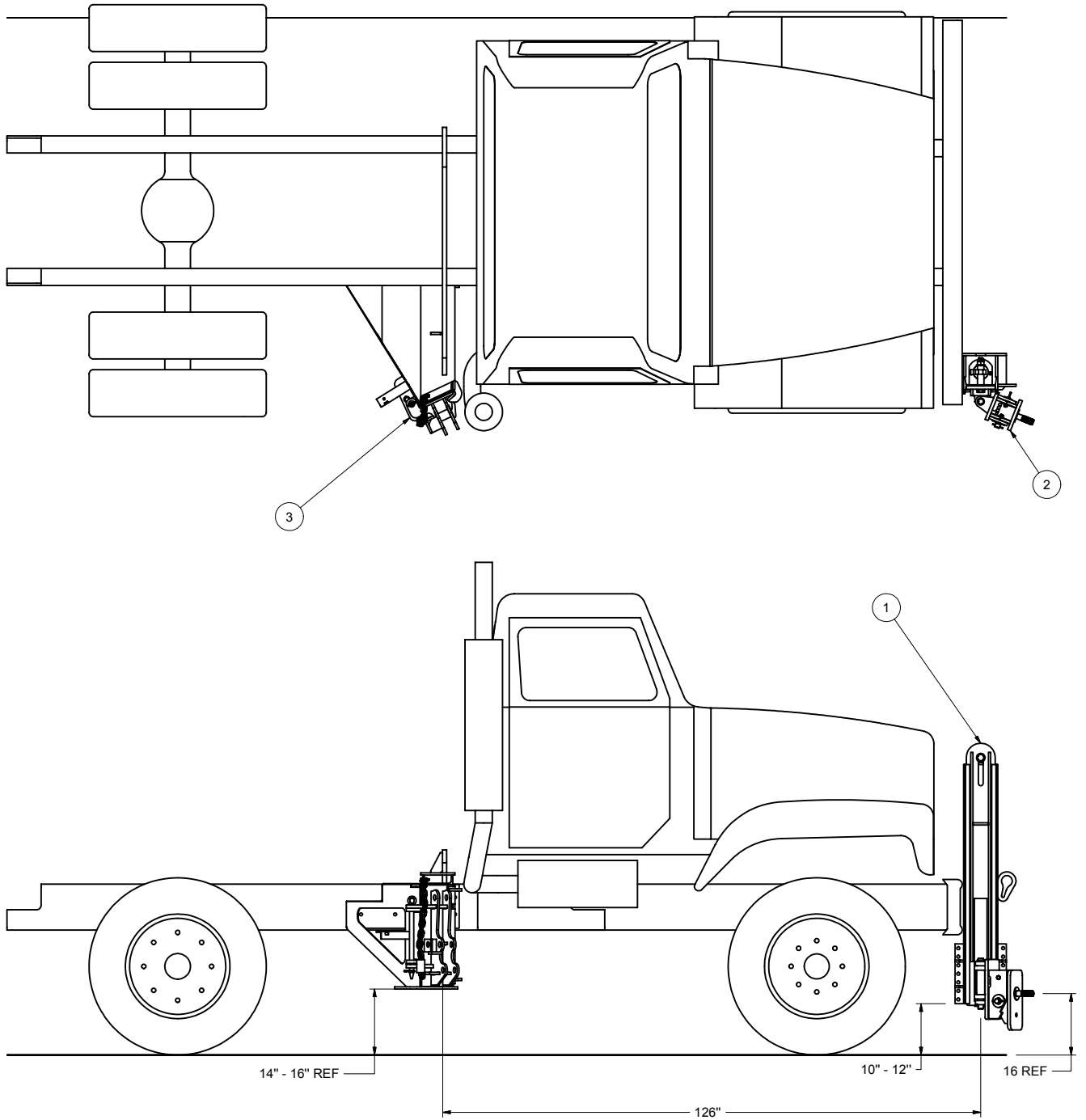


212 North Evans Road Evansdale, Iowa 50707 Phone (319) 236-7977; Fax (319) 236-7980

UNIVERSAL LIFT ARM ASSEMBLY (NEB)

<u>ITEM #</u>	<u>PART #</u>	<u>ALT ITEM #</u>	<u>DESCRIPTION</u>	<u>QTY</u>
1	200119003-2		WELDMENT – INNER ARM LIFT TUBE	1
2	20303014		WELDMENT – OUTER ARM LIFT TUBE	1
3	281022	81022	BOLT HEX 1 X 4 UNC ZINC	1
4	237278		NUT HEX TOPLOCK 1" UNC ZINC	1
5	281013A	81013A	FLATWASHER SAE 1" ZINC	1
6	20P074		PIN 1 X 7 CH	1
7	20P054		PIN 1 X 4 5/8 CH	1
8	280536A		CLINCH PIN 5/16 X 1 ¼ ZINC	1
9	3SK3450	80508A	COTTER PIN ¼ X 2 ½ ZINC	1

**225 DOUBLE FUNCTION PATROL WING
DUAL ARM MTG KIT**



EQUIPMENT MAY NOT BE EXACTLY AS SHOWN. SOME COMPONENTS MAY BE OPTIONAL.
TO MAINTAIN OUR ON-GOING PRODUCT AND DEVELOPMENT IMPROVEMENT PROGRAM, VIKING-CIVES RESERVES THE RIGHT TO CHANGE EQUIPMENT & SPECIFICATION WITHOUT NOTICE.

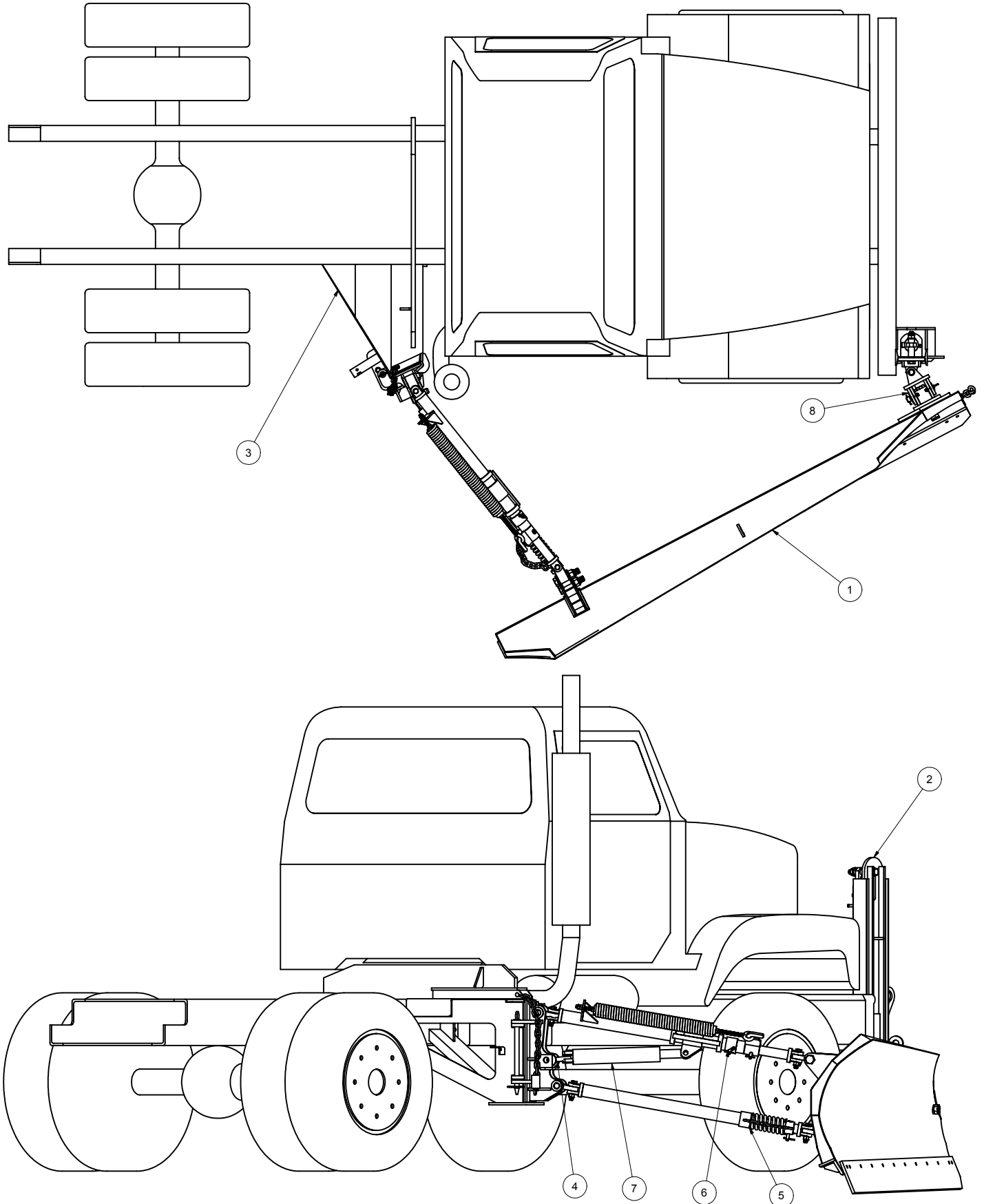


212 North Evans Road Evansdale, Iowa 50707 Phone (319) 236-7977; Fax (319) 236-7980

DUAL FUNCTION PATROL WING DUAL ARM MTG KIT

<u>ITEM #</u>	<u>PART #</u>	<u>DESCRIPTION</u>	<u>QTY</u>
1	200701926	FRONT MAST ASSEMBLY AH200	1
2	201401070	HINGE ASSEMBLY FULL TRIP	1
3	201001242	DETACH BRACKET WELDMENT METRO 3 POINT ARM	1

STANDARD 225 WING INSTALLATION ON TRUCK BODY



EQUIPMENT MAY NOT BE EXACTLY AS SHOWN. SOME COMPONENTS MAY BE OPTIONAL.
TO MAINTAIN OUR ON-GOING PRODUCT AND DEVELOPMENT IMPROVEMENT PROGRAM, VIKING-CIVES RESERVES THE RIGHT TO CHANGE EQUIPMENT & SPECIFICATION WITHOUT NOTICE.



212 North Evans Road Evansdale, Iowa 50707 Phone (319) 236-7977; Fax (319) 236-7980

DUAL FUNCTION WING ON TRUCK

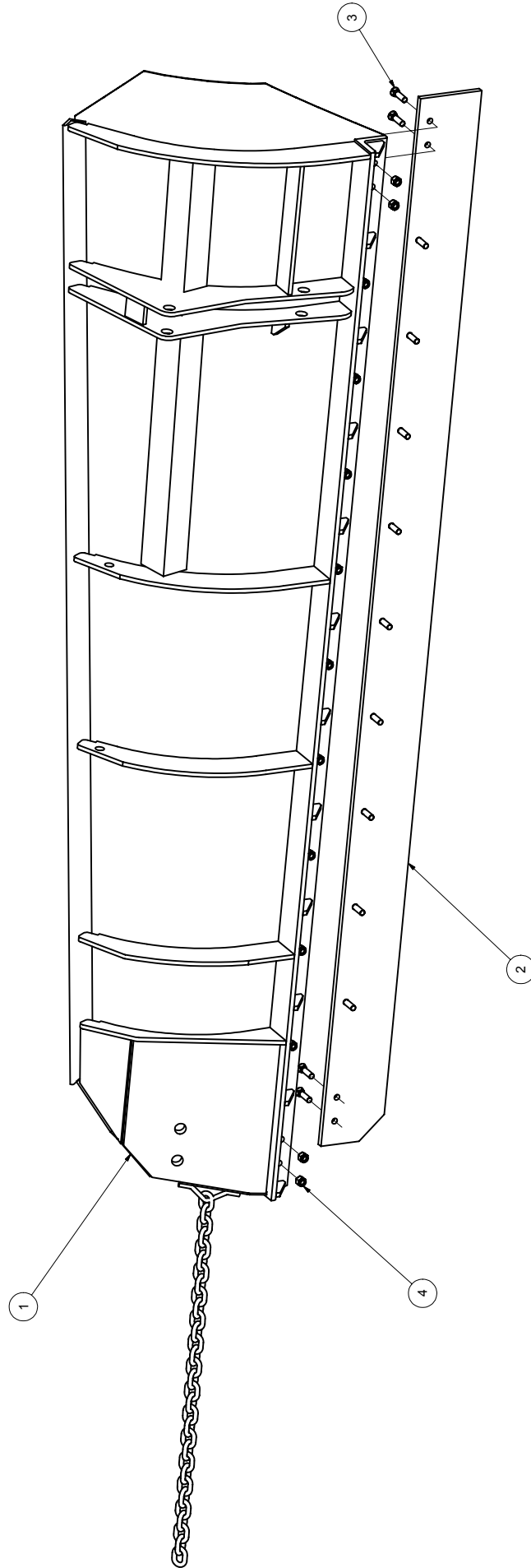
ITEM #	PART #	DESCRIPTION	QTY	OPTIONAL
1	201412008	WING MOLDBOARD WELDMENT – 8’ EDGE	1	*
1	201412007	WING MOLDBOARD WELDMENT – 9’ EDGE	1	*
1	201401095	WING MOLDBOARD WELDMENT – 10’ EDGE	1	*
2	200701926	FRONT MAST ASSEMBLY AH200	1	
3	201001243	REAR SUPPORT WELDMENT 3 POINT	1	
4	201001242	DETACH BRACKET WELDMENT METRO 3 POINT ARM	1	
5	211201012	LOWER STAND OFF ARM	1	
6	201201071	UPPER STAD OFF ARM FULL TRIP	1	
7	280156AC	3 X 14 7/8 DA CYLINDER	1	
8	201401070	HINGE ASSEMBLY FULL TRIP	1	

ITEM NUMBER 1 WILL DEPEND ON WHAT SIZE YOU DESIRE.



212 NORTH EVANS ROAD, EVANSDALE, IOWA 50707 (319)236-7977 PH (319)236-7980 FX

MW DUAL ARM 11' CUTTING EDGE WING ASSEMBLY (NEB)



ITEM	DRAWING NO.	ALT.	ITEM NO.	DESCRIPTION	QTY
1	21403021			STANDARD MW 11' CUTTING EDGE WING (NEB)	1
2	280055A			5/8 X 8 X 132 CUTTING EDGE	1
3	2N81074C		81074C	BOLT PLOW 5/8 X 2 1/2 UNC ZINC	13
4	SK3781			NUT HEX TOPLOCK 5/8" UNC ZINC	13

EQUIPMENT MAY NOT BE EXACTLY AS SHOWN. SOME COMPONENTS MAY BE OPTIONAL. TO MAINTAIN OUR ON-GOING PRODUCT AND DEVELOPMENT IMPROVEMENT PROGRAM, VIKING-CIVES RESERVES THE RIGHT TO CHANGE EQUIPMENT & SPECIFICATION WITHOUT NOTICE.

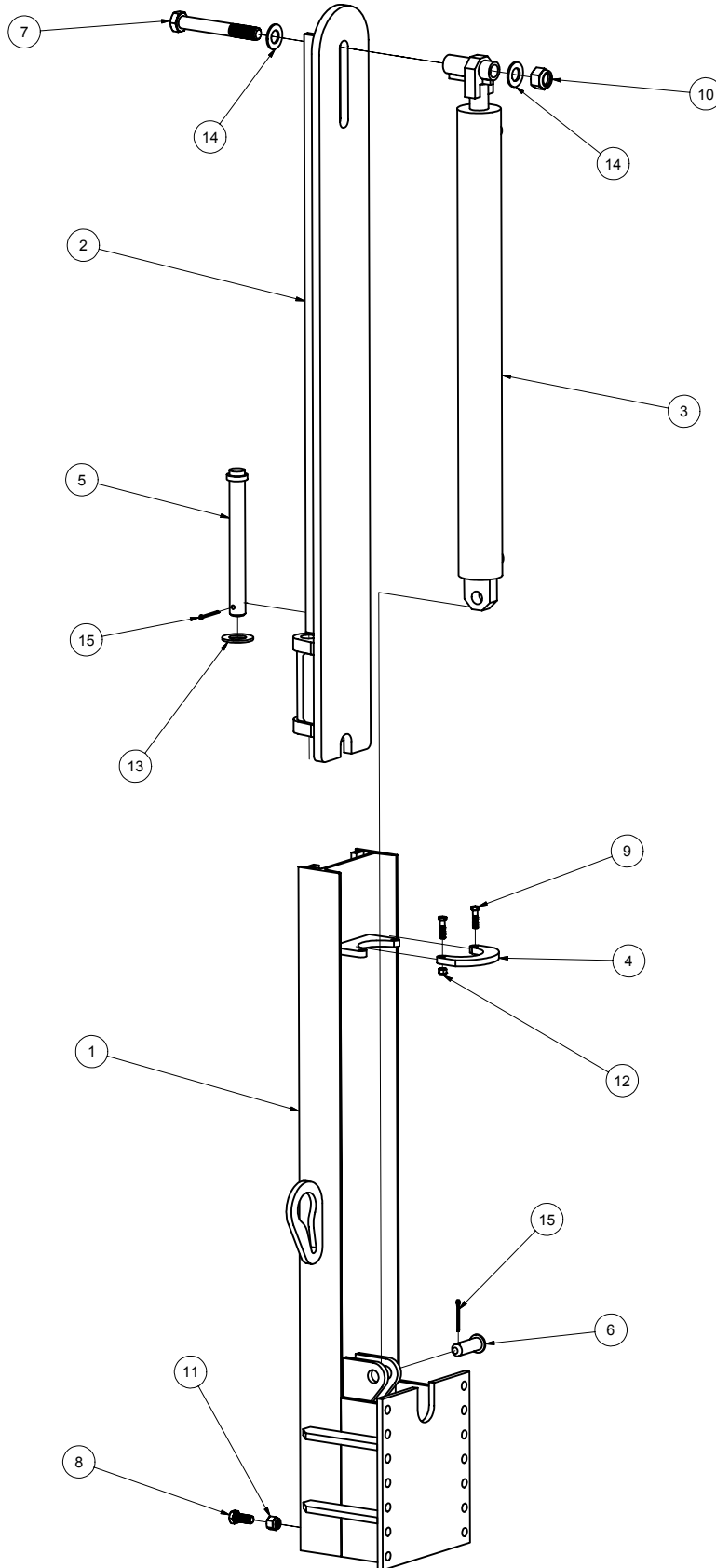


212 North Evans Road Evansdale, Iowa 50707 Phone (319) 236-7977; Fax (319) 236-7980

MW DUAL ARM 11' CUTTING EDGE WING ASSEMBLY (NEB)

<u>ITEM #</u>	<u>PART #</u>	<u>ALT PART #</u>	<u>DESCRIPTION</u>	<u>QTY</u>
1	21403021		STANDARD MW 11' CUTTING EDGE WING (NEB)	1
2	280055A		5/8 X 8 X 132 CUTTING EDGE	1
3	2N81074C	81074C	BOLT PLOW 5/8 X 2 1/2 UNC ZINC	13
4	3SK3781		NUT HEX TOPLOCK 5/8" UNC ZINC	13

MW 225 FRONT MAST ASSEMBLY



EQUIPMENT MAY NOT BE EXACTLY AS SHOWN. SOME COMPONENTS MAY BE OPTIONAL TO MAINTAIN OUR ON-GOING PRODUCT AND DEVELOPMENT IMPROVEMENT PROGRAM, VIKING-CIVES RESERVES THE RIGHT TO CHANGE EQUIPMENT & SPECIFICATION WITHOUT NOTICE.



212 North Evans Road Evansdale, Iowa 50707 Phone (319) 236-7977; Fax (319) 236-7980

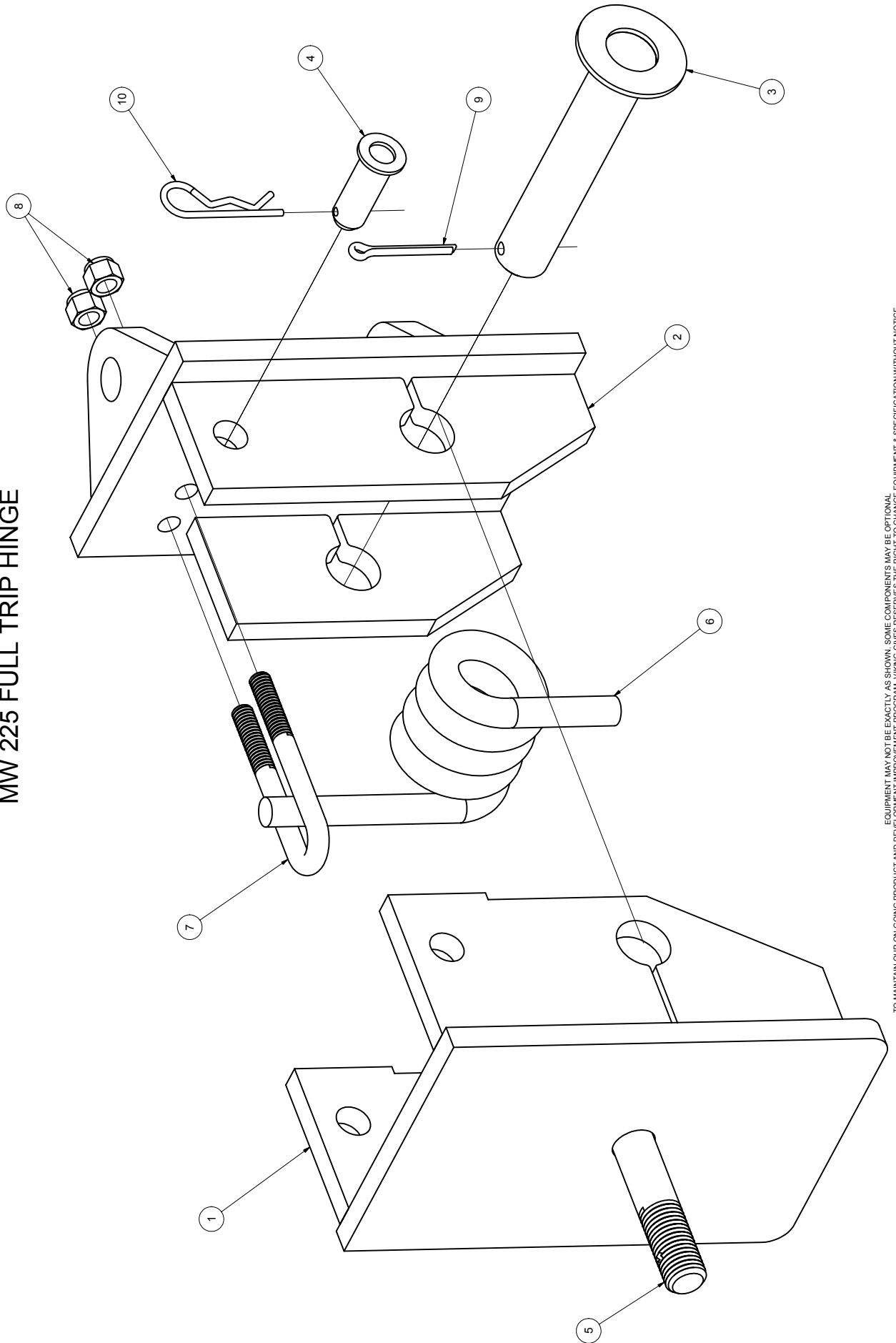
200701926: FRONT MAST ASSEMBLY AH200

ITEM #	PART #	DESCRIPTION	QTY
1	200701925	FRONT MAST WELDMENT M56 AH200 VCM	1
2	210703015	SLIDE WELDMENT FRONT MAST M54 AH200	1
3	20540030	CYLINDER 3 X 33 DA	1
4	210705022	CYLINDER CLAMP OUTER	1
5	200900190	PIN 1.250 DIA X 10.375	1
6	200900003	PIN 1.000 DIA X 2.563 UH TO CH 3.500 OA	1
7	281022	BOLT HEX 1 X 7 ½ UNC ZINC	1
8	3SK3698	BOLT HEX 5/8 X 1 ½ UNC ZINC	1
9	3SK3585	BOLT HEX 3/8 X 1 ½ UNC ZINC	2
10	281001B	NUT HEX ELASTIC 1 UNC ZINC	1
11	3SK3781	NUT HEX ELASTIC 5/8 UNC ZINC	1
12	3SK3591	NUT HEX ELASTIC 3/8 UNC ZINC	2
13	281015A	FLATWASHER 1 ¼ USS ZINC	1
14	281020C	FLATWASHER 1 USS ZINC	1
15	280556	COTTER PIN ¼ X 2 ZINC	2



212 NORTH EVANS ROAD, EVANSDALE, IOWA 50707 (319)236-7977 PH (319)236-7980 FX

MW 225 FULL TRIP HINGE



EQUIPMENT MAY NOT BE EXACTLY AS SHOWN. SOME COMPONENTS MAY BE OPTIONAL.
TO MAINTAIN OUR ON-GOING PRODUCT AND DEVELOPMENT IMPROVEMENT PROGRAM, VIKING-CIVES RESERVES THE RIGHT TO CHANGE EQUIPMENT & SPECIFICATION WITHOUT NOTICE.



212 North Evans Road Evansdale, Iowa 50707 Phone (319) 236-7977; Fax (319) 236-7980

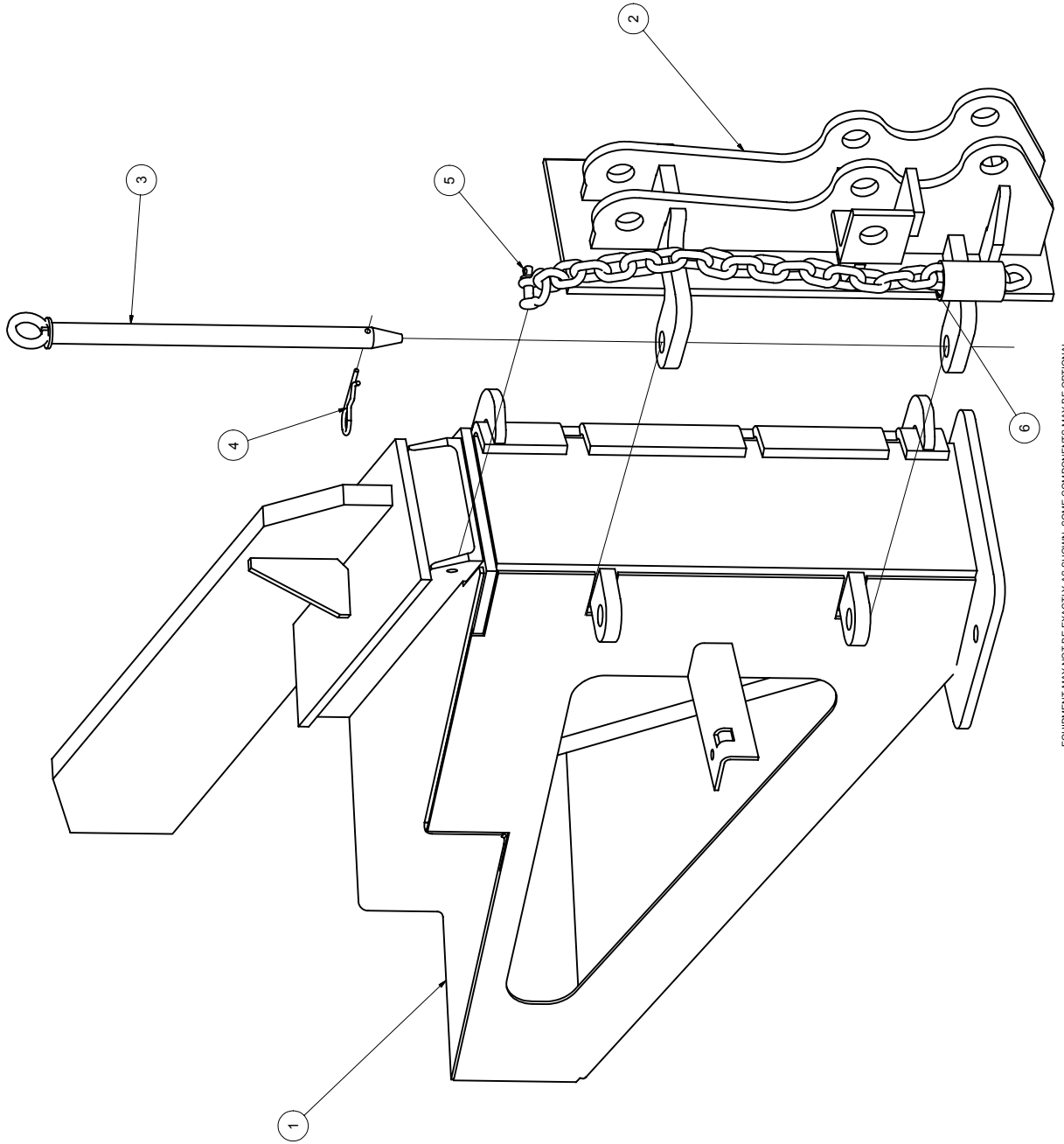
201401070: FULL TRIP HINGE

<u>ITEM #</u>	<u>PART #</u>	<u>ALT PART #</u>	<u>DESCRIPTION</u>	<u>QTY</u>
1	201401074		HINGE BLOCK WELDMENT FULL TRIP	1
2	201401071		PIVOT BLOCK WELDMENT FULL TRIP	1
3	200900221	20P032A	PIN 1.625 DIA X 8.788 WELDMENT	1
4	200900003	20P148	PIN 1.000 DIA X 2.563 WELDMENT	1
5	200702037		BOLT DRILLED 1.250 DIA X 5.000 UNC ZINC	1
6	20580013	280413	SPRING TORSION RH TRIP HINGE 7" FRONT POST	1
7	20620016	20M236	U-BOLT TYPE 5/8	1
8	3SK3785		NUT HEX ELASTIC 5/8 UNC ZINC	2
9	280507		COTTER PIN 3/4 X 3 ZINC	1
10	2HW13L-0360		COTTER HAIR PIN 3/16 X 3 3/4 ZINC	1



212 NORTH EVANS ROAD, EVANSDALE, IOWA 50707 (319)236-7977 PH (319)236-7980 FX

BRACKET ASS'Y - DETACH METRO 3 POINT ARM



EQUIPMENT MAY NOT BE EXACTLY AS SHOWN. SOME COMPONENTS MAY BE OPTIONAL.
TO MAINTAIN OUR ON-GOING PRODUCT AND DEVELOPMENT IMPROVEMENT PROGRAM, VIKING-CIVES RESERVES THE RIGHT TO CHANGE EQUIPMENT & SPECIFICATION WITHOUT NOTICE.



212 North Evans Road Evansdale, Iowa 50707 Phone (319) 236-7977; Fax (319) 236-7980

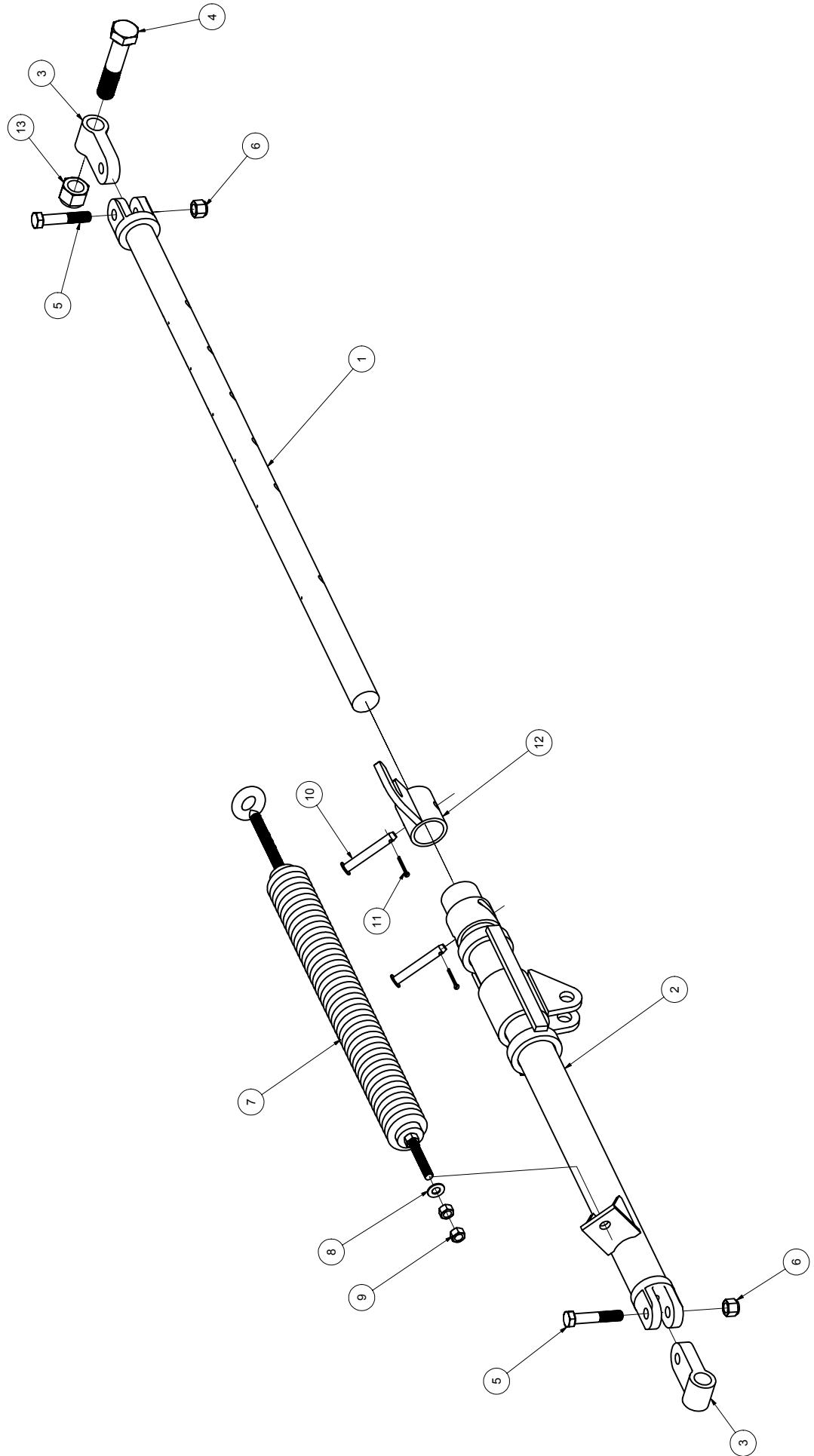
201001243: BRACKET ASSEMBLY – DETACH METRO 3 POINT ARM

ITEM #	PART #	ALT PART #	DESCRIPTION	QTY
1	201001233		REAR SUPPORT WELDMENT 3 POINT	1
2	201001242		DETACH BRACKET WELDMENT 3 POINT	1
3	200900198		PIN 1 DIA X 15 ½ WELDMENT	1
4	280536		COTTER HAIR PIN 3/16 X 3 ¾	1
5	2050023	280511	CHAIN CLEVIS 3/8 SHACKLE RD SCREW PIN	1
6	200401587		CHAIN 3/8 X 38 LG	1



212 NORTH EVANS ROAD, EVANSDALE, IOWA 50707 (319)236-7977 PH (319)236-7980 FX

FULL TRIP UPPER ARM ASS'Y - HYD



EQUIPMENT MAY NOT BE EXACTLY AS SHOWN. SOME COMPONENTS MAY BE OPTIONAL. TO MAINTAIN OUR ON-GOING PRODUCT AND DEVELOPMENT IMPROVEMENT PROGRAM, VIKING-CIVES RESERVES THE RIGHT TO CHANGE EQUIPMENT & SPECIFICATION WITHOUT NOTICE.



212 North Evans Road Evansdale, Iowa 50707 Phone (319) 236-7977; Fax (319) 236-7980

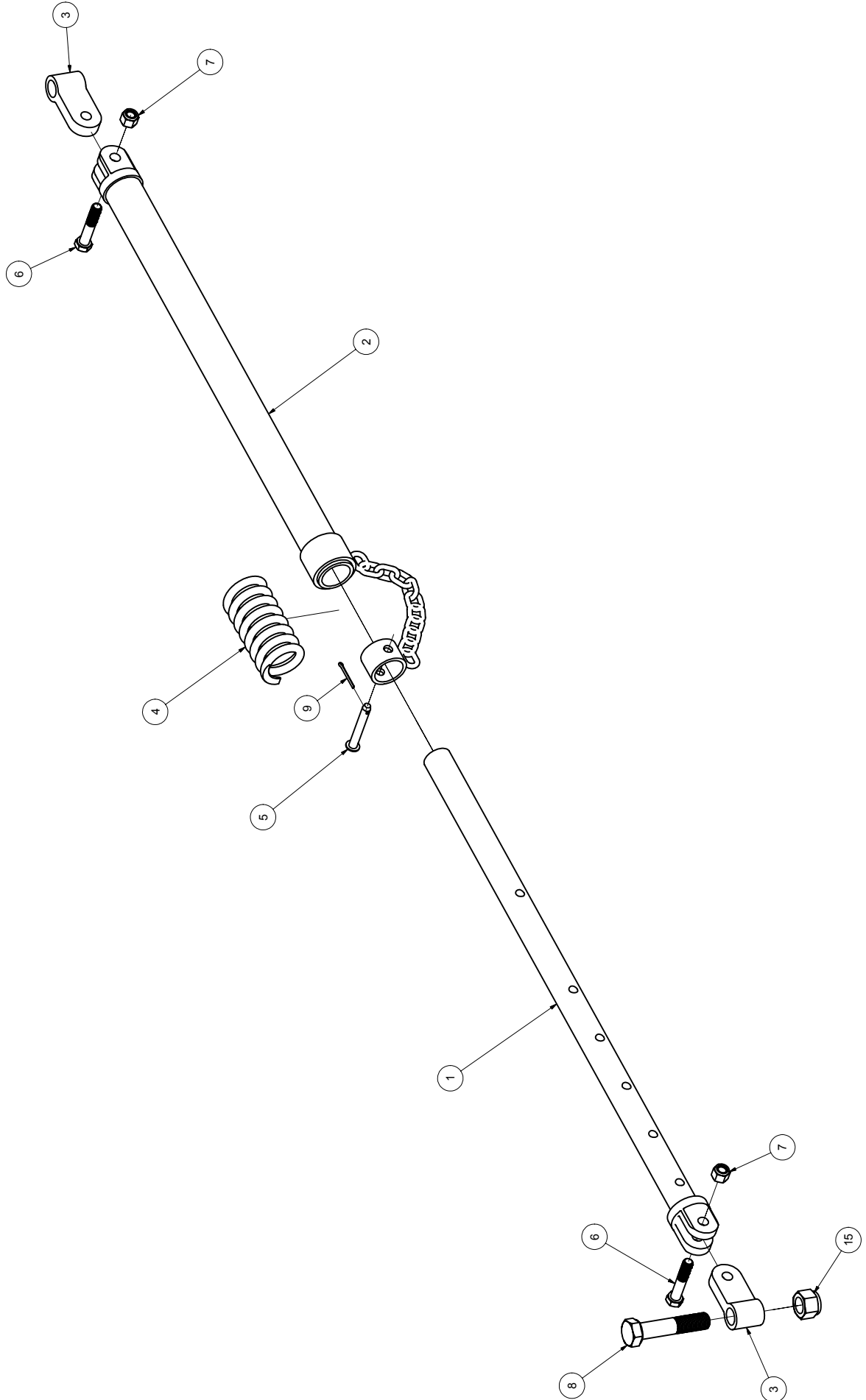
201201071: FULL TRIP UPPER ARM ASSEMBLY - HYD

ITEM #	PART #	DESCRIPTION	QTY
1	211203028	INNER STAND OFF ARM WITH FAB BLOCK	1
2	211203035	UPPER OUTER ARM WLEDMENT FULL TRIP	1
3	20017167-4	PIVOT BLOCK	2
4	281028C	BOLT HEX 1 ¼ X 5 ½ NC HD GRADE 5 ZINC	1
5	3SK3807	BOLT ¾ X 4 GRADE 8 ZINC	2
6	3SK3811	NUT HEX TOPLOCK ¾ UNC ZINC	2
7	212401001	SPRING SUSPENSION	1
8	281070E	FLATWASHER HARDENED 5/8 ZINC	1
9	3SK3785	NUT HEX TOPLOCK 5/8 UNC GRADE 8 ZINC	2
10	20P022	PIN 5/8 X 4 YZ	2
11	280518	PIN COTTER 3/16 X 1 ½ ZINC	2
12	211203008	COLLAR SLIDING	1
13	280999D	NUT HEX ELASTIC 1 ¼ UNC ZINC	1



212 NORTH EVANS ROAD, EVANSDALE, IOWA 50707 (319)236-7977 PH (319)236-7980 FX

FULL TRIP LOWER ARM ASSEMBLY



EQUIPMENT MAY NOT BE EXACTLY AS SHOWN. SOME COMPONENTS MAY BE OPTIONAL. TO MAINTAIN OUR ON-GOING PRODUCT AND DEVELOPMENT IMPROVEMENT PROGRAM, VIKING-CIVES RESERVES THE RIGHT TO CHANGE EQUIPMENT & SPECIFICATION WITHOUT NOTICE.

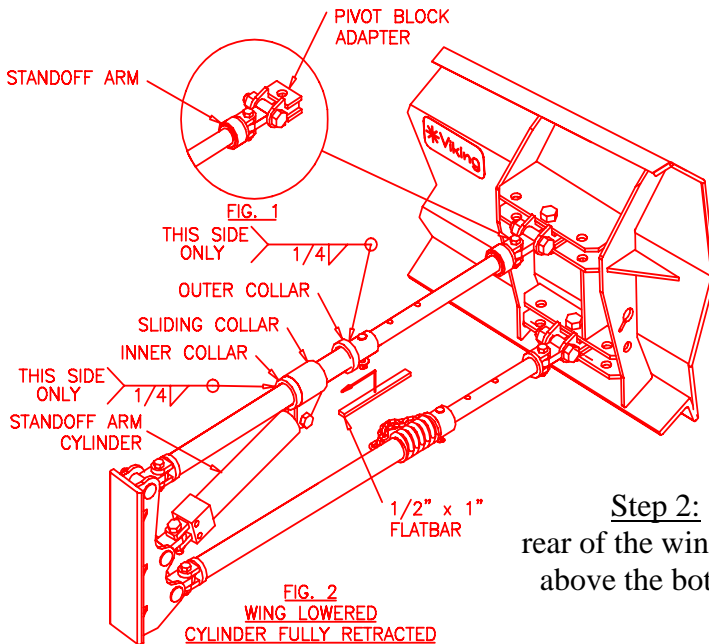


212 North Evans Road Evansdale, Iowa 50707 Phone (319) 236-7977; Fax (319) 236-7980

211201012: FULL TRIP LOWER ARM ASSEMBLY

ITEM #	PART #	ALT PART #	DESCRIPTION	QTY
1	211203038		INNER STAND OFF ARM WITH FAB BLOCK HD	1
2	211203037		OUTER ARM LOWER WITH FAB BLOCK	1
3	2007167-4		PIVOT BLOCK	2
4	280410		SPRING COMPRESSION WING BRACE	1
5	20P002		PIN 0.625 DIA X 4.000 WELD'T	1
6	3SK3807		BOLT HEX 3/4 X 4 UNC ZINC	2
7	3SK3811		NUT HEX ELASTIC 3/4 UNC ZINC	2
8	381023C		BOLT HEX 1 1/4 X 6 UNC ZINC	1
9	20P012	200900086	PIN 1.250 DIA X 4.000 WELD'T	1
10	280999D		NUT HEX ELASTIC 1 1/4 UNC ZINC	1

INSTALLATION AND ADJUSTMENT OF THE VIKING HYDRAULIC WING



Step 1: Unit must be operational. Complete the entire installation, including hydraulic system and controls. Bolt pivot block adapters to standoff arms first (Fig. 1) attach the standoff arms to the rear slide, mount the wing then connect the cylinder as shown in Fig. 2.

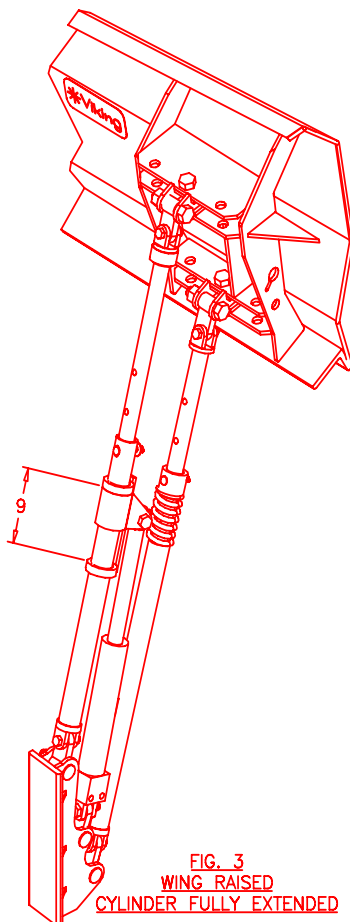
Step 2: Using an overhead crane or other safe lifting device, raise the rear of the wing to its folded position (Fig. 3), raise the front of the wing just above the bottom of the front mast. Check for clearance around mirror and exhaust shield.

Step 3: Extend the standoff arm cylinder to its maximum length. Make a mark on outer arm around the outer end of the sliding collar.

Step 4: Lower the wing (Front and Rear) to the floor. Retract the stand off arm cylinder completely (Fig. 2). Position the outer collar approx. 1/2 way over the mark made in step 3. Tack outer collar on side away from sliding collar. Raise wing, check for clearance if more clearance is needed, adjust outer collar.

Step 5: With the wing back on the floor and the outer collar correctly located, weld 1/4 fillet around the outside (toward wing) edge of the outer collar (Fig. 2), move the inner collar so that there is 9" between the collars as shown and weld 1/4 fillet around both sides of the collar (Fig. 2)

Step 6: Position sliding collar approx. half way between inner and outer collars. Make sure that the lugs on the sliding collar are pointing down. Place 1/2 x 3/4 flat bar between lugs on sliding collar and weld to inner and outer collars. This prevents the sliding collar from rotating and damaging the cylinder.



INSTALLATION AND ADJUSTMENT OF THE VIKING HEAVY DUTY WING

Viking heavy duty wings are furnished with a variety of attaching points to accommodate a wide range of applications.

Beginning at the front of the wing (See Fig. 1), two (2) holes are provided for attaching to the wing to the front hinge bolt. The hole you select for your particular application should position the wing to provide a small overlap from the plow cutting edge to the wing cutting edge. Care must be taken not to position the wing too far forward. The wing should be able to operate through its entire range of motion without striking the plow, even with the plow in the raised position.

NOTE: This condition can sometimes occur if the plow set-up is incorrect. Excessive plow lift can reduce plow / wing clearance even if wing set-up is correct. Check the plow set-up before making any corrections to the wing.

At the rear of the wing are a series of holes for attaching the stand-off arms (wing braces). The stand-off arms must be attached to the rear mast slide (or patrol wing rear support) first. The outer end of the arms are then attached to the 90° pivot block adapter and positioned in the hole at the rear of the wing which places the arms at a 90° angle to the wing (See Fig.2). The stand-off arms must be as square as possible to the wing to permit smooth operation of all wing functions.

